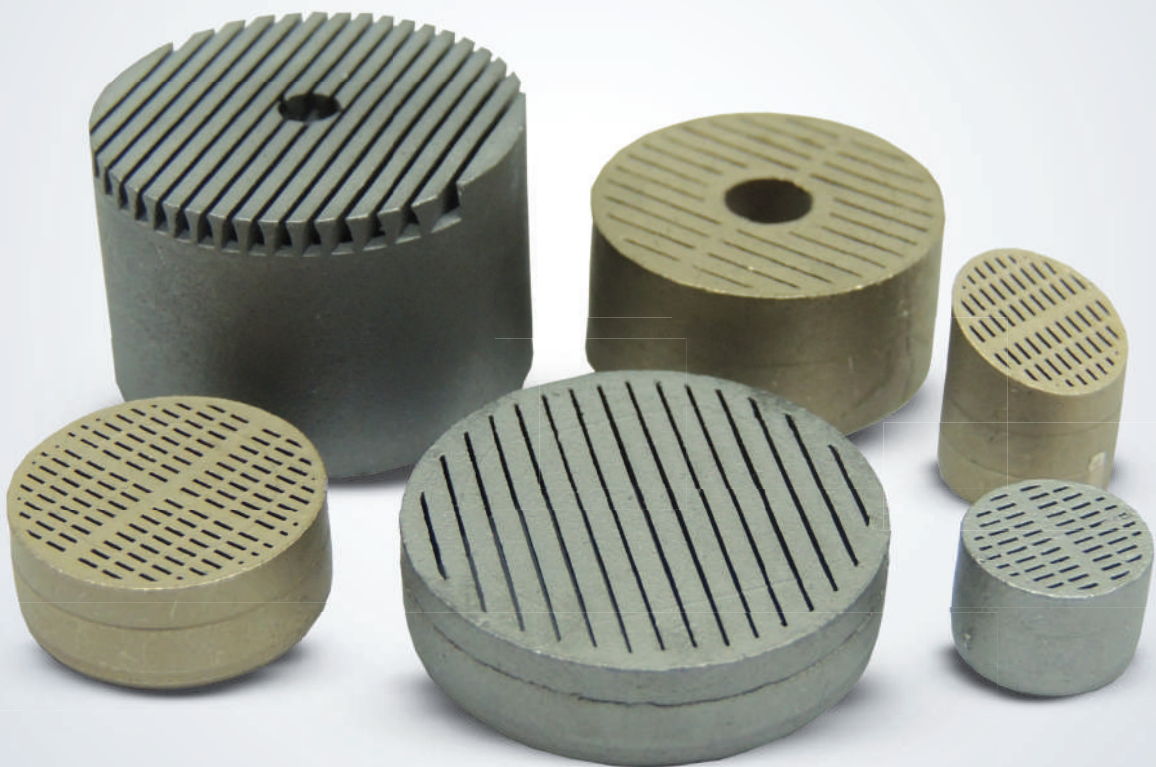




*SUPER SELF-CLEANING
VENTS FOR SAND PROCESSES*



*HIGH PERFORMANCE
VENT SYSTEMS*

INDEX

TECHNOLOGY

APPLICATION	04
SUPER SELF-CLEANING	04
DESIGN EXCELLENCE	04
MATERIALS	05

MAXVENTS

VENTS MANUFACTURED IN LEADED YELLOW BRASS	
STANDARD	06
PROFILED	12
VENTS MANUFACTURED IN MANGANESE BRASS	
STANDARD	16
PROFILED	21
CURVED CONCAVE	27
CURVED CONVEX	28
INCLINED	29
EXTRACTOR STANDARD	30
NEEDLE STANDARD	32
STANDARD 50 (SOON TO BE LAUNCHED)	33

ZANATTAVENTS

VENTS MANUFACTURED IN LEADED YELLOW BRASS	
STANDARD	36
VENTS MANUFACTURED IN MANGANESE BRASS	
STANDARD	40
CURVED CONCAVE	44
CURVED CONVEX	45
INCLINED	45

INDEX

EXTRACTOR STANDARD	46
NEEDLE STANDARD	47

MELTVENTS - FS

VENTS MANUFACTURED IN STAINLESS STEEL

STANDARD	48
CURVED CONCAVE	53
CURVED CONVEX	54
INCLINED	54
STANDARD 50	55

VENTS MANUFACTURED IN CARBON STEEL

PROFILED	57
EXTRACTOR STANDARD	61
NEEDLE STANDARD	63

MELTVENTS - VH

VENTS MANUFACTURED IN STAINLESS STEEL

STANDARD	65
CURVED CONCAVE	69
CURVED CONVEX	69
INCLINED	70

VENTS MANUFACTURED IN CARBON STEEL

EXTRACTOR STANDARD	71
NEEDLE STANDARD	72

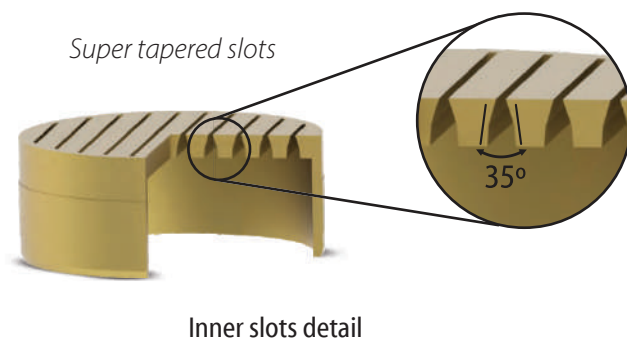
APPLICATION



The Ventistamp super self-cleaning vents have high performance in a variety of sand processes, such as Hot Box, Shell Molding, Warm Box, Cold box and Green Sand Molding.

SUPER SELF-CLEANING

The super tapered slots make it difficult for sand grains to get trapped inside, reducing the frequency of clogged vents and machine stoppages for cleaning.



DESIGN EXCELLENCE



Ventistamp's slanted and angled vents have revolutionised the concept of tool ventilation, due to their slots that follow the geometry of the cavity while preserving the internal taper.

LEADED YELLOW BRASS

Leaded Yellow Brass vents are indicated for low-volume production or manual sand compaction processes, because it's an alloy that presents a lower resistance to wear, when compared to other alloys. On the other hand, it has the advantage of a more competitive selling price. The Leaded Yellow Brass alloy is used in the manufacture of the Standard and Profiled Vent models.

STAINLESS STEEL

Vents made of stainless steel are indicated for medium and high volumes of production, because it's an alloy with excellent resistance to wear. The stainless steel alloy is used in the manufacture of the following vent models: Standard-50, Standard, Curved Concave, Curved Convex e Inclined, in Sand Processes.

MANGANESE BRASS

Manganese Brass vents are suitable for medium volume production, as it's an alloy that presents a good resistance to wear, although less than the steel alloys. Manganese Brass alloy is used in the manufacturing of all vent models.

CARBON STEEL

Vents made of Carbon Steel are indicated for medium and high volumes of production, because it's an alloy with great resistance to wear. The Carbon Steel alloy is used in the manufacture of the following vent models: Extractor Standard, Needle and Profiled, in Sand Processes.

MAXVENTS



MaxVents is a super self-cleaning vent line that represents the concept of slotted vents. They are manufactured in Leaded Yellow Brass and Manganese Brass alloys and have slots with 35° or 50° of taper. It's a vent line indicated for small and medium production, in Cold Box, and Green Sand Moulding processes.

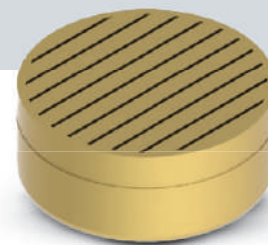
MAXVENTS *Leaded Yellow Brass – Standard Model*



Slots of 0,2mm and internal taper of 35°- Recommended for sands of grain size over 70 AFS

Height of 1/4"		Height of 5/16"		Height of 3/8"		Height of 6mm	
Ø	Code	Ø	Code	Ø	Code	Ø	Code
3/16"	RP20H1/4-3/16LC	3/16"	RP20H5/16-3/16LC	5/16"	RP20H3/8-5/16LC	3	RM20H6-03LC
1/4"	RP20H1/4-1/4LC	1/4"	RP20H5/16-1/4LC	3/8"	RP20H3/8-3/8LC	4	RM20H6-04LC
5/16"	RP20H1/4-5/16LC	5/16"	RP20H5/16-5/16LC	1/2"	RP20H3/8-1/2LC	5	RM20H6-05LC
3/8"	RP20H1/4-3/8LC	3/8"	RP20H5/16-3/8LC	5/8"	RP20H3/8-5/8LC	6	RM20H6-06LC
1/2"	RP20H1/4-1/2LC	7/16"	RP20H5/16-7/16LC	3/4"	RP20H3/8-3/4LC	8	RM20H6-08LC
		1/2"	RP20H5/16-1/2LC			10	RM20H6-10LC
		9/16"	RP20H5/16-9/16LC			12	RM20H6-12LC
		5/8"	RP20H5/16-5/8LC				
		3/4"	RP20H5/16-3/4LC				
		7/8"	RP20H5/16-7/8LC				
		1"	RP20H5/16-1LC				

MAXVENTS *Leaded Yellow Brass – Standard Model*



Slots of 0,2mm and internal taper of 35° - Recommended for sands of grain size over 70 AFS

Height of 7mm

Ø	Code
3	RM20H7-03LC
4	RM20H7-04LC
5	RM20H7-05LC
6	RM20H7-06LC
8	RM20H7-08LC
10	RM20H7-10LC
12	RM20H7-12LC
14	RM20H7-14LC
16	RM20H7-16LC
18	RM20H7-18LC
20	RM20H7-20LC

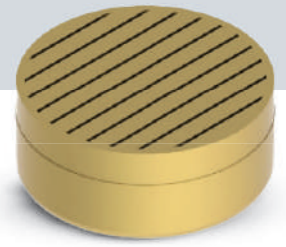
Height of 8mm

Ø	Code
4	RM20H8-04LC
5	RM20H8-05LC
6	RM20H8-06LC
7	RM20H8-07LC
8	RM20H8-08LC
10	RM20H8-10LC
12	RM20H8-12LC
13	RM20H8-13LC
14	RM20H8-14LC
16	RM20H8-16LC
20	RM20H8-20LC
22	RM20H8-22LC
25	RM20H8-25LC

Height of 10mm

Ø	Code
4	RM20H10-04LC
5	RM20H10-05LC
6	RM20H10-06LC
8	RM20H10-08LC
10	RM20H10-10LC
12	RM20H10-12LC
13	RM20H10-13LC
14	RM20H10-14LC
16	RM20H10-16LC
18	RM20H10-18LC
20	RM20H10-20LC
22	RM20H10-22LC
25	RM20H10-25LC

MAXVENTS *Leaded Yellow Brass – Standard Model*



Slots of 0,3mm and internal taper of 35°- Recommended for sands of grain size between 55 AFS and 70 AFS

Height of 1/4"

Ø	Code
3/16"	RP30H1/4-3/16LC
1/4"	RP30H1/4-1/4LC
5/16"	RP30H1/4-5/16LC
3/8"	RP30H1/4-3/8LC
1/2"	RP30H1/4-1/2LC

Height of 5/16"

Ø	Code
1/8"	RP30H5/16-1/8LC
3/16"	RP30H5/16-3/16LC
1/4"	RP30H5/16-1/4LC
5/16"	RP30H5/16-5/16LC
3/8"	RP30H5/16-3/8LC
7/16"	RP30H5/16-7/16LC
1/2"	RP30H5/16-1/2LC
9/16"	RP30H5/16-9/16LC
5/8"	RP30H5/16-5/8LC
3/4"	RP30H5/16-3/4LC
7/8"	RP30H5/16-7/8LC
1"	RP30H5/16-1LC
1 1/4"	RP30H5/16-1 1/4LC
1 3/4"	RP30H5/16-1 3/4LC

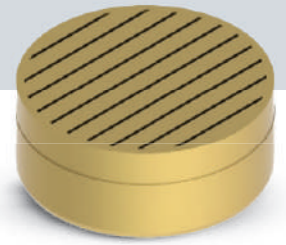
Height of 3/8"

Ø	Code
5/16"	RP30H3/8-5/16LC
3/8"	RP30H3/8-3/8LC
7/16"	RP30H3/8-7/16LC
1/2"	RP30H3/8-1/2LC
9/16"	RP30H3/8-9/16LC
5/8"	RP30H3/8-5/8LC
3/4"	RP30H3/8-3/4LC
7/8"	RP30H3/8-7/8LC
1"	RP30H3/8-1LC

Height of 6mm

Ø	Code
3	RM30H6-03LC
4	RM30H6-04LC
5	RM30H6-05LC
6	RM30H6-06LC
8	RM30H6-08LC
10	RM30H6-10LC
12	RM30H6-12LC

MAXVENTS *Leaded Yellow Brass – Standard Model*



Slots of 0,3mm and internal taper of 35° - Recommended for sands of grain size between 55 AFS and 70 AFS

Height of 7mm

Ø	Code
3	RM30H7-03LC
4	RM30H7-04LC
5	RM30H7-05LC
6	RM30H7-06LC
8	RM30H7-08LC
10	RM30H7-10LC
12	RM30H7-12LC
14	RM30H7-14LC
16	RM30H7-16LC
18	RM30H7-18LC
20	RM30H7-20LC
25	RM30H7-25LC
30	RM30H7-30LC

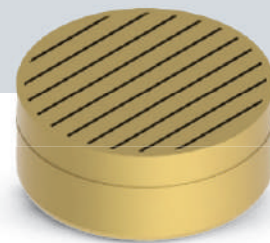
Height of 8mm

Ø	Code
3	RM30H8-03LC
4	RM30H8-04LC
5	RM30H8-05LC
6	RM30H8-06LC
7	RM30H8-07LC
8	RM30H8-08LC
10	RM30H8-10LC
12	RM30H8-12LC
13	RM30H8-13LC
14	RM30H8-14LC
15	RM30H8-15LC
16	RM30H8-16LC
18	RM30H8-18LC
20	RM30H8-20LC
22	RM30H8-22LC
25	RM30H8-25LC
26	RM30H8-26LC
30	RM30H8-30LC

Height of 10mm

Ø	Code
3	RM30H10-03LC
4	RM30H10-04LC
5	RM30H10-05LC
6	RM30H10-06LC
8	RM30H10-08LC
10	RM30H10-10LC
12	RM30H10-12LC
13	RM30H10-13LC
14	RM30H10-14LC
15	RM30H10-15LC
16	RM30H10-16LC
18	RM30H10-18LC
20	RM30H10-20LC
22	RM30H10-22LC
25	RM30H10-25LC
26	RM30H10-26LC
30	RM30H10-30LC

MAXVENTS *Leaded Yellow Brass – Standard Model*



Slots of 0,45mm and internal taper of 35° - Recommended for sands of grain size below 55 AFS

Height of 1/4"

Ø	Code
3/16"	RP45H1/4-3/16LC
1/4"	RP45H1/4-1/4LC
5/16"	RP45H1/4-5/16LC
3/8"	RP45H1/4-3/8LC
1/2"	RP45H1/4-1/2LC

Height of 5/16"

Ø	Code
3/16"	RP45H5/16-3/16LC
1/4"	RP45H5/16-1/4LC
5/16"	RP45H5/16-5/16LC
3/8"	RP45H5/16-3/8LC
7/16"	RP45H5/16-7/16LC
1/2"	RP45H5/16-1/2LC
9/16"	RP45H5/16-9/16LC
5/8"	RP45H5/16-5/8LC
3/4"	RP45H5/16-3/4LC
7/8"	RP45H5/16-7/8LC
1"	RP45H5/16-1LC
1 1/4"	RP45H5/16-1 1/4LC
1 3/4"	RP45H5/16-1 3/4LC

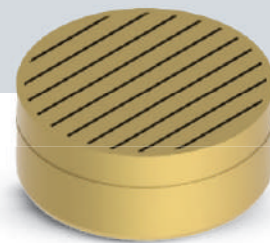
Height of 3/8"

Ø	Code
5/16"	RP45H3/8-5/16LC
3/8"	RP45H3/8-3/8LC
7/16"	RP45H3/8-7/16LC
1/2"	RP45H3/8-1/2LC
9/16"	RP45H3/8-9/16LC
5/8"	RP45H3/8-5/8LC
3/4"	RP45H3/8-3/4LC
7/8"	RP45H3/8-7/8LC
1"	RP45H3/8-1LC

Height of 6mm

Ø	Code
3	RM45H6-03LC
4	RM45H6-04LC
5	RM45H6-05LC
6	RM45H6-06LC
8	RM45H6-08LC
10	RM45H6-10LC
12	RM45H6-12LC

MAXVENTS *Leaded Yellow Brass – Standard Model*



Slots of 0,45mm and internal taper of 35° - Recommended for sands of grain size below 55 AFS

Height of 7mm

Ø	Code
4	RM45H7-04LC
5	RM45H7-05LC
6	RM45H7-06LC
8	RM45H7-08LC
10	RM45H7-10LC
12	RM45H7-12LC
14	RM45H7-14LC
16	RM45H7-16LC
18	RM45H7-18LC
20	RM45H7-20LC

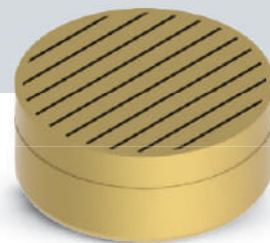
Height of 8mm

Ø	Code
3	RM45H8-03LC
4	RM45H8-04LC
5	RM45H8-05LC
6	RM45H8-06LC
7	RM45H8-07LC
8	RM45H8-08LC
9	RM45H8-09LC
10	RM45H8-10LC
12	RM45H8-12LC
12.5	RM45H8-12.5LC
13	RM45H8-13LC
14	RM45H8-14LC
15	RM45H8-15LC
16	RM45H8-16LC
18	RM45H8-18LC
20	RM45H8-20LC
22	RM45H8-22LC
24	RM45H8-24LC
25	RM45H8-25LC
26	RM45H8-26LC
30	RM45H8-30LC
44	RM45H8-44LC

Height of 10mm

Ø	Code
3	RM45H10-03LC
4	RM45H10-04LC
5	RM45H10-05LC
6	RM45H10-06LC
8	RM45H10-08LC
9	RM45H10-09LC
10	RM45H10-10LC
12	RM45H10-12LC
14	RM45H10-14LC
16	RM45H10-16LC
18	RM45H10-18LC
20	RM45H10-20LC
22	RM45H10-22LC
24	RM45H10-24LC
25	RM45H10-25LC
26	RM45H10-26LC
30	RM45H10-30LC

MAXVENTS *Leaded Yellow Brass – Profiled Model*



Slots of 0,3mm and internal taper of 35° - Recommended for sands of grain size between 55 AFS and 70 AFS. P (mm) and P(in) are the machining heights

Height of 1/4"

Ø	P (in)	Code
3/16"	.059"	RP30H1/4P15-3/16LC
1/4"	.059"	RP30H1/4P15-1/4LC
5/16"	.059"	RP30H1/4P15-5/16LC
3/8"	.059"	RP30H1/4P15-3/8LC
7/16"	.059"	RP30H1/4P15-7/16LC
1/2"	.059"	RP30H1/4P15-1/2LC

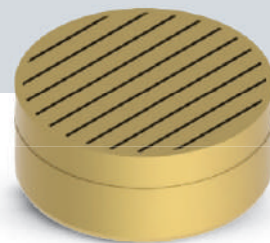
Height of 5/16"

Ø	P (in)	Code
3/16"	.059"	RP30H5/16P15-3/16LC
1/4"	.059"	RP30H5/16P15-1/4LC
5/16"	.059"	RP30H5/16P15-5/16LC
3/8"	.059"	RP30H5/16P15-3/8LC
7/16"	.059"	RP30H5/16P15-7/16LC
1/2"	.059"	RP30H5/16P15-1/2LC
9/16"	.059"	RP30H5/16P15-9/16LC
5/8"	.059"	RP30H5/16P15-5/8LC
3/4"	.059"	RP30H5/16P15-3/4LC
7/8"	.059"	RP30H5/16P15-7/8LC
1"	.059"	RP30H5/16P15-1LC

Height of 3/8"

Ø	P (in)	Code
5/16"	.059"	RP30H3/8P15-5/16LC
3/8"	.059"	RP30H3/8P15-3/8LC
7/16"	.059"	RP30H3/8P15-7/16LC
1/2"	.059"	RP30H3/8P15-1/2LC
9/16"	.059"	RP30H3/8P15-9/16LC
5/8"	.059"	RP30H3/8P15-5/8LC
3/4"	.059"	RP30H3/8P15-3/4LC
7/8"	.059"	RP30H3/8P15-7/8LC
1"	.059"	RP30H3/8P15-1LC
3/16"	.0157"	RP30H3/8P40-3/16LC
1/4"	.0157"	RP30H3/8P40-1/4LC
5/16"	.0157"	RP30H3/8P40-5/16LC
3/8"	.0157"	RP30H3/8P40-3/8LC
7/16"	.0157"	RP30H3/8P40-7/16LC
1/2"	.0157"	RP30H3/8P40-1/2LC
9/16"	.0157"	RP30H3/8P40-9/16LC
5/8"	.0157"	RP30H3/8P40-5/8LC
3/4"	.0157"	RP30H3/8P40-3/4LC
7/8"	.0157"	RP30H3/8P40-7/8LC
1"	.0157"	RP30H3/8P40-1LC

MAXVENTS *Leaded Yellow Brass – Profiled Model*



Slots of 0,3mm and internal taper of 35°- Recommended for sands of grain size between 55 AFS and 70 AFS. P (mm) and P(in) are the machining heights

Height of 6mm

Ø	P (mm)	Code
4	1.5	RM30H6P15-04LC
5	1.5	RM30H6P15-05LC
6	1.5	RM30H6P15-06LC
8	1.5	RM30H6P15-08LC
10	1.5	RM30H6P15-10LC
12	1.5	RM30H6P15-12LC
14	1.5	RM30H6P15-14LC
16	1.5	RM30H6P15-16LC
18	1.5	RM30H6P15-18LC
20	1.5	RM30H6P15-20LC

Height of 7mm

Ø	P (mm)	Code
4	1.5	RM30H7P15-04LC
5	1.5	RM30H7P15-05LC
6	1.5	RM30H7P15-06LC
8	1.5	RM30H7P15-08LC
10	1.5	RM30H7P15-10LC
12	1.5	RM30H7P15-12LC
14	1.5	RM30H7P15-14LC
16	1.5	RM30H7P15-16LC
18	1.5	RM30H7P15-18LC
20	1.5	RM30H7P15-20LC

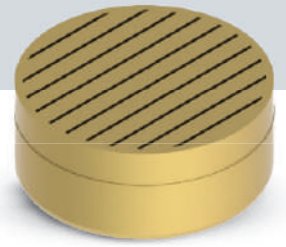
Height of 8mm

Ø	P (mm)	Code
4	1.5	RM30H8P15-04LC
5	1.5	RM30H8P15-05LC
6	1.5	RM30H8P15-06LC
8	1.5	RM30H8P15-08LC
10	1.5	RM30H8P15-10LC
12	1.5	RM30H8P15-12LC
14	1.5	RM30H8P15-14LC
16	1.5	RM30H8P15-16LC
18	1.5	RM30H8P15-18LC
20	1.5	RM30H8P15-20LC
25	1.5	RM30H8P15-25LC

Height of 10mm

Ø	P (mm)	Code
4	1.5	RM30H10P15-04LC
5	1.5	RM30H10P15-05LC
6	1.5	RM30H10P15-06LC
8	1.5	RM30H10P15-08LC
10	1.5	RM30H10P15-10LC
12	1.5	RM30H10P15-12LC
14	1.5	RM30H10P15-14LC
16	1.5	RM30H10P15-16LC
20	1.5	RM30H10P15-20LC
25	1.5	RM30H10P15-25LC
6	4	RM30H10P40-06LC
8	4	RM30H10P40-08LC
10	4	RM30H10P40-10LC
12	4	RM30H10P40-12LC
14	4	RM30H10P40-14LC
16	4	RM30H10P40-16LC
20	4	RM30H10P40-20LC
25	4	RM30H10P40-25LC

MAXVENTS *Leaded Yellow Brass – Profiled Model*



Slots of 0,45mm and internal taper of 35° - Recommended for sands of grain size below 55 AFS. P (mm) and P(in) are the machining heights.

Height of 1/4"

Ø	P (in)	Code
3/16"	.059"	RP45H1/4P15-3/16LC
1/4"	.059"	RP45H1/4P15-1/4LC
5/16"	.059"	RP45H1/4P15-5/16LC
3/8"	.059"	RP45H1/4P15-3/8LC
7/16"	.059"	RP45H1/4P15-7/16LC
1/2"	.059"	RP45H1/4P15-1/2LC

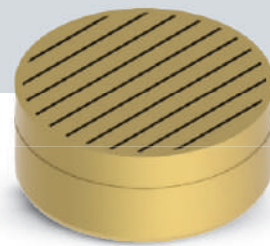
Height of 5/16"

Ø	P (in)	Code
3/16"	.059"	RP45H5/16P15-3/16LC
1/4"	.059"	RP45H5/16P15-1/4LC
5/16"	.059"	RP45H5/16P15-5/16LC
3/8"	.059"	RP45H5/16P15-3/8LC
7/16"	.059"	RP45H5/16P15-7/16LC
1/2"	.059"	RP45H5/16P15-1/2LC
9/16"	.059"	RP45H5/16P15-9/16LC
5/8"	.059"	RP45H5/16P15-5/8LC
3/4"	.059"	RP45H5/16P15-3/4LC
7/8"	.059"	RP45H5/16P15-7/8LC
1"	.059"	RP45H5/16P15-1LC

Height of 3/8"

Ø	P (in)	Code
5/16"	.059"	RP45H3/8P15-5/16LC
3/8"	.059"	RP45H3/8P15-3/8LC
7/16"	.059"	RP45H3/8P15-7/16LC
1/2"	.059"	RP45H3/8P15-1/2LC
9/16"	.059"	RP45H3/8P15-9/16LC
5/8"	.059"	RP45H3/8P15-5/8LC
3/4"	.059"	RP45H3/8P15-3/4LC
7/8"	.059"	RP45H3/8P15-7/8LC
1"	.059"	RP45H3/8P15-1LC
3/16"	.0157"	RP45H3/8P40-3/16LC
1/4"	.0157"	RP45H3/8P40-1/4LC
5/16"	.0157"	RP45H3/8P40-5/16LC
3/8"	.0157"	RP45H3/8P40-3/8LC
7/16"	.0157"	RP45H3/8P40-7/16LC
1/2"	.0157"	RP45H3/8P40-1/2LC
9/16"	.0157"	RP45H3/8P40-9/16LC
5/8"	.0157"	RP45H3/8P40-5/8LC
3/4"	.0157"	RP45H3/8P40-3/4LC
7/8"	.0157"	RP45H3/8P40-7/8LC
1"	.0157"	RP45H3/8P40-1LC

MAXVENTS *Leaded Yellow Brass – Profiled Model*



Slots of 0,45mm and internal taper of 35° - Recommended for sands of grain size below 55 AFS. P (mm) and P(in) are the machining heights.

Height of 6mm

Ø	P (mm)	Code
4	1.5	RM45H6P15-04LC
5	1.5	RM45H6P15-05LC
6	1.5	RM45H6P15-06LC
8	1.5	RM45H6P15-08LC
10	1.5	RM45H6P15-10LC
12	1.5	RM45H6P15-12LC
14	1.5	RM45H6P15-14LC
16	1.5	RM45H6P15-16LC
18	1.5	RM45H6P15-18LC
20	1.5	RM45H6P15-20LC

Height of 7mm

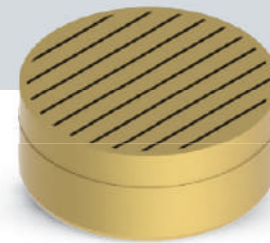
Ø	P (mm)	Code
4	1.5	RM45H7P15-04LC
5	1.5	RM45H7P15-05LC
6	1.5	RM45H7P15-06LC
8	1.5	RM45H7P15-08LC
10	1.5	RM45H7P15-10LC
12	1.5	RM45H7P15-12LC
14	1.5	RM45H7P15-14LC
16	1.5	RM45H7P15-16LC
18	1.5	RM45H7P15-18LC
20	1.5	RM45H7P15-20LC

Height of 8mm

Ø	P (mm)	Code
4	1.5	RM45H8P15-04LC
5	1.5	RM45H8P15-05LC
6	1.5	RM45H8P15-06LC
8	1.5	RM45H8P15-08LC
10	1.5	RM45H8P15-10LC
12	1.5	RM45H8P15-12LC
14	1.5	RM45H8P15-14LC
16	1.5	RM45H8P15-16LC
18	1.5	RM45H8P15-18LC
20	1.5	RM45H8P15-20LC
25	1.5	RM45H8P15-25LC

Height of 10mm

Ø	P (mm)	Code
4	1.5	RM45H10P15-04LC
5	1.5	RM45H10P15-05LC
6	1.5	RM45H10P15-06LC
8	1.5	RM45H10P15-08LC
10	1.5	RM45H10P15-10LC
12	1.5	RM45H10P15-12LC
14	1.5	RM45H10P15-14LC
16	1.5	RM45H10P15-16LC
20	1.5	RM45H10P15-20LC
25	1.5	RM45H10P15-25LC
6	4	RM45H10P40-06LC
8	4	RM45H10P40-08LC
10	4	RM45H10P40-10LC
12	4	RM45H10P40-12LC
14	4	RM45H10P40-14LC
16	4	RM45H10P40-16LC
20	4	RM45H10P40-20LC
25	4	RM45H10P40-25LC



Slots of 0,2mm and internal taper of 35°- Recommended for sands of grain size over 70 AFS

Height of 1/4"

Ø	Code
3/16"	RP20H1/4-3/16LM
1/4"	RP20H1/4-1/4LM
5/16"	RP20H1/4-5/16LM
3/8"	RP20H1/4-3/8LM
1/2"	RP20H1/4-1/2LM

Height of 5/16"

Ø	Code
3/16"	RP20H5/16-3/16LM
1/4"	RP20H5/16-1/4LM
5/16"	RP20H5/16-5/16LM
3/8"	RP20H5/16-3/8LM
7/16"	RP20H5/16-7/16LM
1/2"	RP20H5/16-1/2LM
9/16"	RP20H5/16-9/16LM
5/8"	RP20H5/16-5/8LM
3/4"	RP20H5/16-3/4LM
7/8"	RP20H5/16-7/8LM
1"	RP20H5/16-1LM

Height of 3/8"

Ø	Code
5/16"	RP20H3/8-5/16LM
3/8"	RP20H3/8-3/8LM
1/2"	RP20H3/8-1/2LM
5/8"	RP20H3/8-5/8LM
3/4"	RP20H3/8-3/4LM

Height of 6mm

Ø	Code
3	RM20H6-03LM
4	RM20H6-04LM
5	RM20H6-05LM
6	RM20H6-06LM
8	RM20H6-08LM
10	RM20H6-10LM
12	RM20H6-12LM

Height of 7mm

Ø	Code
3	RM20H7-03LM
4	RM20H7-04LM
5	RM20H7-05LM
6	RM20H7-06LM
8	RM20H7-08LM
10	RM20H7-10LM
12	RM20H7-12LM
14	RM20H7-14LM
16	RM20H7-16LM
18	RM20H7-18LM
20	RM20H7-20LM

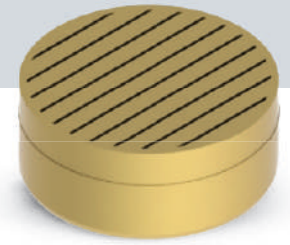
Height of 8mm

Ø	Code
4	RM20H8-04LM
5	RM20H8-05LM
6	RM20H8-06LM
7	RM20H8-07LM
8	RM20H8-08LM
10	RM20H8-10LM
12	RM20H8-12LM
13	RM20H8-13LM
14	RM20H8-14LM
16	RM20H8-16LM
20	RM20H8-20LM
22	RM20H8-22LM
25	RM20H8-25LM

Height of 10mm

Ø	Code
4	RM20H10-04LM
5	RM20H10-05LM
6	RM20H10-06LM
8	RM20H10-08LM
10	RM20H10-10LM
12	RM20H10-12LM
13	RM20H10-13LM
14	RM20H10-14LM
16	RM20H10-16LM
18	RM20H10-18LM
20	RM20H10-20LM
22	RM20H10-22LM
25	RM20H10-25LM

MAXVENTS *Manganese Brass – Standard Model*



Slots of 0,3mm and internal taper of 35°- Recommended for sands of grain size between 55 AFS and 70 AFS

Height of 1/4"

Ø	Code
3/16"	RP30H1/4-3/16LM
1/4"	RP30H1/4-1/4LM
5/16"	RP30H1/4-5/16LM
3/8"	RP30H1/4-3/8LM
1/2"	RP30H1/4-1/2LM

Height of 5/16"

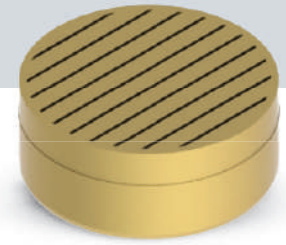
Ø	Code
1/8"	RP30H5/16-1/8LM
3/16"	RP30H5/16-3/16LM
1/4"	RP30H5/16-1/4LM
5/16"	RP30H5/16-5/16LM
3/8"	RP30H5/16-3/8LM
7/16"	RP30H5/16-7/16LM
1/2"	RP30H5/16-1/2LM
9/16"	RP30H5/16-9/16LM
5/8"	RP30H5/16-5/8LM
3/4"	RP30H5/16-3/4LM
7/8"	RP30H5/16-7/8LM
1"	RP30H5/16-1LM
1 1/4"	RP30H5/16-1 1/4LM

Height of 3/8"

Ø	Code
5/16"	RP30H3/8-5/16LM
3/8"	RP30H3/8-3/8LM
7/16"	RP30H3/8-7/16LM
1/2"	RP30H3/8-1/2LM
9/16"	RP30H3/8-9/16LM
5/8"	RP30H3/8-5/8LM
3/4"	RP30H3/8-3/4LM
7/8"	RP30H3/8-7/8LM
1"	RP30H3/8-1LM

Height of 6mm

Ø	Code
3	RM30H6-03LM
4	RM30H6-04LM
5	RM30H6-05LM
6	RM30H6-06LM
8	RM30H6-08LM
10	RM30H6-10LM
12	RM30H6-12LM



Slots of 0,3mm and internal taper of 35°- Recommended for sands of grain size between 55 AFS and 70 AFS

Height of 7mm

Ø	Code
3	RM30H7-03LM
4	RM30H7-04LM
5	RM30H7-05LM
6	RM30H7-06LM
8	RM30H7-08LM
10	RM30H7-10LM
12	RM30H7-12LM
14	RM30H7-14LM
16	RM30H7-16LM
18	RM30H7-18LM
20	RM30H7-20LM
30	RM30H7-30LM

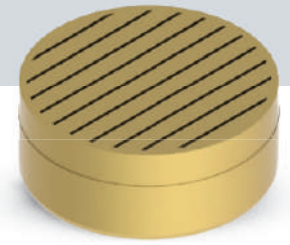
Height of 8mm

Ø	Code
3	RM30H8-03LM
4	RM30H8-04LM
5	RM30H8-05LM
6	RM30H8-06LM
7	RM30H8-07LM
8	RM30H8-08LM
10	RM30H8-10LM
12	RM30H8-12LM
13	RM30H8-13LM
14	RM30H8-14LM
15	RM30H8-15LM
16	RM30H8-16LM
18	RM30H8-18LM
20	RM30H8-20LM
22	RM30H8-22LM
25	RM30H8-25LM
26	RM30H8-26LM
30	RM30H8-30LM

Height of 10mm

Ø	Code
3	RM30H10-03LM
4	RM30H10-04LM
5	RM30H10-05LM
6	RM30H10-06LM
8	RM30H10-08LM
10	RM30H10-10LM
12	RM30H10-12LM
13	RM30H10-13LM
14	RM30H10-14LM
15	RM30H10-15LM
16	RM30H10-16LM
18	RM30H10-18LM
20	RM30H10-20LM
22	RM30H10-22LM
25	RM30H10-25LM
26	RM30H10-26LM
30	RM30H10-30LM

MAXVENTS *Manganese Brass – Standard Model*



Slots of 0,45mm and internal taper of 35°- Recommended for sands of grain size below 55 AFS

Height of 1/4"

Ø	Code
3/16"	RP45H1/4-3/16LM
1/4"	RP45H1/4-1/4LM
5/16"	RP45H1/4-5/16LM
3/8"	RP45H1/4-3/8LM
1/2"	RP45H1/4-1/2LM

Height of 5/16"

Ø	Code
3/16"	RP45H5/16-3/16LM
1/4"	RP45H5/16-1/4LM
5/16"	RP45H5/16-5/16LM
3/8"	RP45H5/16-3/8LM
7/16"	RP45H5/16-7/16LM
1/2"	RP45H5/16-1/2LM
9/16"	RP45H5/16-9/16LM
5/8"	RP45H5/16-5/8LM
3/4"	RP45H5/16-3/4LM
7/8"	RP45H5/16-7/8LM
1"	RP45H5/16-1LM
1 1/4"	RP45H5/16-1 1/4LM
1 3/4"	RP45H5/16-1 3/4LM

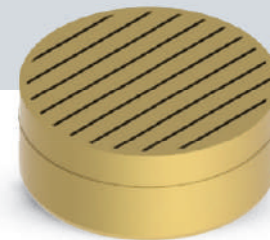
Height of 3/8"

Ø	Code
5/16"	RP45H3/8-5/16LM
3/8"	RP45H3/8-3/8LM
7/16"	RP45H3/8-7/16LM
1/2"	RP45H3/8-1/2LM
9/16"	RP45H3/8-9/16LM
5/8"	RP45H3/8-5/8LM
3/4"	RP45H3/8-3/4LM
7/8"	RP45H3/8-7/8LM
1"	RP45H3/8-1LM

Height of 6mm

Ø	Code
3	RM45H6-03LM
4	RM45H6-04LM
5	RM45H6-05LM
6	RM45H6-06LM
8	RM45H6-08LM
10	RM45H6-10LM
12	RM45H6-12LM

MAXVENTS *Manganese Brass – Standard Model*



Slots of 0,45mm and internal taper of 35°- Recommended for sands of grain size below 55 AFS

Height of 7mm

Ø	Code
4	RM45H7-04LM
5	RM45H7-05LM
6	RM45H7-06LM
8	RM45H7-08LM
10	RM45H7-10LM
12	RM45H7-12LM
14	RM45H7-14LM
16	RM45H7-16LM
18	RM45H7-18LM
20	RM45H7-20LM

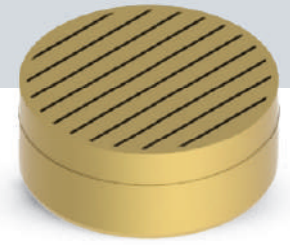
Height of 8mm

Ø	Code
3	RM45H8-03LM
4	RM45H8-04LM
5	RM45H8-05LM
6	RM45H8-06LM
7	RM45H8-07LM
8	RM45H8-08LM
9	RM45H8-09LM
10	RM45H8-10LM
12	RM45H8-12LM
12.5	RM45H8-12.5LM
13	RM45H8-13LM
14	RM45H8-14LM
15	RM45H8-15LM
16	RM45H8-16LM
18	RM45H8-18LM
20	RM45H8-20LM
22	RM45H8-22LM
24	RM45H8-24LM
25	RM45H8-25LM
26	RM45H8-26LM
30	RM45H8-30LM
44	RM45H8-44LM

Height of 10mm

Ø	Code
3	RM45H10-03LM
4	RM45H10-04LM
5	RM45H10-05LM
6	RM45H10-06LM
8	RM45H10-08LM
9	RM45H10-09LM
10	RM45H10-10LM
12	RM45H10-12LM
14	RM45H10-14LM
16	RM45H10-16LM
18	RM45H10-18LM
20	RM45H10-20LM
22	RM45H10-22LM
24	RM45H10-24LM
25	RM45H10-25LM
26	RM45H10-26LM
30	RM45H10-30LM

MAXVENTS *Manganese Brass - Profiled Model*



Slots of 0,3mm and internal taper of 35°- Recommended for sands of grain size between 55 AFS and 70 AFS. P (mm) and P(in) are the machining heights.

Height of 1/4"

Ø	P (in)	Code
3/16"	.059"	RP30H1/4P15-3/16LM
1/4"	.059"	RP30H1/4P15-1/4LM
5/16"	.059"	RP30H1/4P15-5/16LM
3/8"	.059"	RP30H1/4P15-3/8LM
7/16"	.059"	RP30H1/4P15-7/16LM
1/2"	.059"	RP30H1/4P15-1/2LM

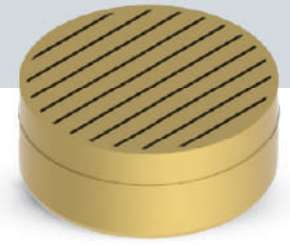
Height of 5/16"

Ø	P (in)	Code
3/16"	.059"	RP30H5/16P15-3/16LM
1/4"	.059"	RP30H5/16P15-1/4LM
5/16"	.059"	RP30H5/16P15-5/16LM
3/8"	.059"	RP30H5/16P15-3/8LM
7/16"	.059"	RP30H5/16P15-7/16LM
1/2"	.059"	RP30H5/16P15-1/2LM
9/16"	.059"	RP30H5/16P15-9/16LM
5/8"	.059"	RP30H5/16P15-5/8LM
3/4"	.059"	RP30H5/16P15-3/4LM
7/8"	.059"	RP30H5/16P15-7/8LM
1"	.059"	RP30H5/16P15-1LM

Height of 3/8"

Ø	P (in)	Code
5/16"	.059"	RP30H3/8P15-5/16LM
3/8"	.059"	RP30H3/8P15-3/8LM
7/16"	.059"	RP30H3/8P15-7/16LM
1/2"	.059"	RP30H3/8P15-1/2LM
9/16"	.059"	RP30H3/8P15-9/16LM
5/8"	.059"	RP30H3/8P15-5/8LM
3/4"	.059"	RP30H3/8P15-3/4LM
7/8"	.059"	RP30H3/8P15-7/8LM
1"	.059"	RP30H3/8P15-1LM
3/16"	.0157"	RP30H3/8P40-3/16LM
1/4"	.0157"	RP30H3/8P40-1/4LM
5/16"	.0157"	RP30H3/8P40-5/16LM
3/8"	.0157"	RP30H3/8P40-3/8LM
7/16"	.0157"	RP30H3/8P40-7/16LM
1/2"	.0157"	RP30H3/8P40-1/2LM
9/16"	.0157"	RP30H3/8P40-9/16LM
5/8"	.0157"	RP30H3/8P40-5/8LM
3/4"	.0157"	RP30H3/8P40-3/4LM
7/8"	.0157"	RP30H3/8P40-7/8LM
1"	.0157"	RP30H3/8P40-1LM

MAXVENTS *Manganese Brass - Profiled Model*



Slots of 0,3mm and internal taper of 35°- Recommended for sands of grain size between 55 AFS and 70 AFS. P (mm) and P(in) are the machining heights.

Height of 6mm

Ø	P (mm)	Code
4	1,5	RM30H6P15-04LM
5	1,5	RM30H6P15-05LM
6	1,5	RM30H6P15-06LM
8	1,5	RM30H6P15-08LM
10	1,5	RM30H6P15-10LM
12	1,5	RM30H6P15-12LM
14	1,5	RM30H6P15-14LM
16	1,5	RM30H6P15-16LM
18	1,5	RM30H6P15-18LM
20	1,5	RM30H6P15-20LM

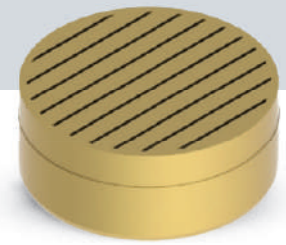
Height of 7mm

Ø	P (mm)	Code
4	1,5	RM30H7P15-04LM
5	1,5	RM30H7P15-05LM
6	1,5	RM30H7P15-06LM
8	1,5	RM30H7P15-08LM
10	1,5	RM30H7P15-10LM
12	1,5	RM30H7P15-12LM
14	1,5	RM30H7P15-14LM
16	1,5	RM30H7P15-16LM
18	1,5	RM30H7P15-18LM
20	1,5	RM30H7P15-20LM

Height of 8mm

Ø	P (mm)	Code
4	1,5	RM30H8P15-04LM
5	1,5	RM30H8P15-05LM
6	1,5	RM30H8P15-06LM
8	1,5	RM30H8P15-08LM
10	1,5	RM30H8P15-10LM
12	1,5	RM30H8P15-12LM
14	1,5	RM30H8P15-14LM
16	1,5	RM30H8P15-16LM
18	1,5	RM30H8P15-18LM
20	1,5	RM30H8P15-20LM
25	1,5	RM30H8P15-25LM

MAXVENTS *Manganese Brass - Profiled Model*

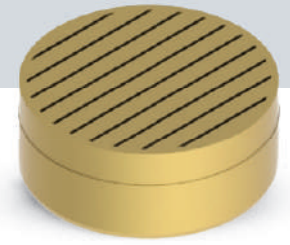


Slots of 0,3mm and internal taper of 35°- Recommended for sands of grain size between 55 AFS and 70 AFS. P (mm) and P(in) are the machining heights.

Height of 10mm

Ø	P (mm)	Code
4	1,5	RM30H10P15-04LM
5	1,5	RM30H10P15-05LM
6	1,5	RM30H10P15-06LM
8	1,5	RM30H10P15-08LM
10	1,5	RM30H10P15-10LM
12	1,5	RM30H10P15-12LM
14	1,5	RM30H10P15-14LM
16	1,5	RM30H10P15-16LM
20	1,5	RM30H10P15-20LM
25	1,5	RM30H10P15-25LM
6	4	RM30H10P40-06LM
8	4	RM30H10P40-08LM
10	4	RM30H10P40-10LM
12	4	RM30H10P40-12LM
14	4	RM30H10P40-14LM
16	4	RM30H10P40-16LM
20	4	RM30H10P40-20LM
25	4	RM30H10P40-25LM

MAXVENTS *Manganese Brass - Profiled Model*



Slots of 0,45mm and internal taper of 35°- Recommended for sands of grain size below 55 AFS. P (mm) and P(in) are the machining heights..

Height of 1/4"

Ø	P (in)	Code
3/16"	.059"	RP45H1/4P15-3/16LM
1/4"	.059"	RP45H1/4P15-1/4LM
5/16"	.059"	RP45H1/4P15-5/16LM
3/8"	.059"	RP45H1/4P15-3/8LM
7/16"	.059"	RP45H1/4P15-7/16LM
1/2"	.059"	RP45H1/4P15-1/2LM

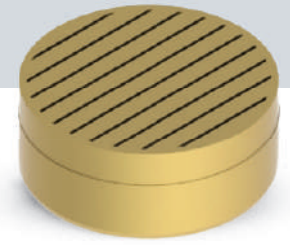
Height of 5/16"

Ø	P (in)	Code
3/16"	.059"	RP45H5/16P15-3/16LM
1/4"	.059"	RP45H5/16P15-1/4LM
5/16"	.059"	RP45H5/16P15-5/16LM
3/8"	.059"	RP45H5/16P15-3/8LM
7/16"	.059"	RP45H5/16P15-7/16LM
1/2"	.059"	RP45H5/16P15-1/2LM
9/16"	.059"	RP45H5/16P15-9/16LM
5/8"	.059"	RP45H5/16P15-5/8LM
3/4"	.059"	RP45H5/16P15-3/4LM
7/8"	.059"	RP45H5/16P15-7/8LM
1"	.059"	RP45H5/16P15-1LM

Height of 3/8"

Ø	P (in)	Code
5/16"	.059"	RP45H3/8P15-5/16LM
3/8"	.059"	RP45H3/8P15-3/8LM
7/16"	.059"	RP45H3/8P15-7/16LM
1/2"	.059"	RP45H3/8P15-1/2LM
9/16"	.059"	RP45H3/8P15-9/16LM
5/8"	.059"	RP45H3/8P15-5/8LM
3/4"	.059"	RP45H3/8P15-3/4LM
7/8"	.059"	RP45H3/8P15-7/8LM
1"	.059"	RP45H3/8P15-1LM
3/16"	.0157"	RP45H3/8P40-3/16LM
1/4"	.0157"	RP45H3/8P40-1/4LM
5/16"	.0157"	RP45H3/8P40-5/16LM
3/8"	.0157"	RP45H3/8P40-3/8LM
7/16"	.0157"	RP45H3/8P40-7/16LM
1/2"	.0157"	RP45H3/8P40-1/2LM
9/16"	.0157"	RP45H3/8P40-9/16LM
5/8"	.0157"	RP45H3/8P40-5/8LM
3/4"	.0157"	RP45H3/8P40-3/4LM
7/8"	.0157"	RP45H3/8P40-7/8LM
1"	.0157"	RP45H3/8P40-1LM

MAXVENTS *Manganese Brass - Profiled Model*



Slots of 0,45mm and internal taper of 35°- Recommended for sands of grain size below 55 AFS. P (mm) and P(in) are the machining heights.

Height of 6mm

Ø	P (mm)	Code
4	1,5	RM45H6P15-04LM
5	1,5	RM45H6P15-05LM
6	1,5	RM45H6P15-06LM
8	1,5	RM45H6P15-08LM
10	1,5	RM45H6P15-10LM
12	1,5	RM45H6P15-12LM
14	1,5	RM45H6P15-14LM
16	1,5	RM45H6P15-16LM
18	1,5	RM45H6P15-18LM
20	1,5	RM45H6P15-20LM

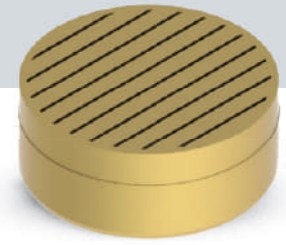
Height of 7mm

Ø	P (mm)	Code
4	1,5	RM45H7P15-04LM
5	1,5	RM45H7P15-05LM
6	1,5	RM45H7P15-06LM
8	1,5	RM45H7P15-08LM
10	1,5	RM45H7P15-10LM
12	1,5	RM45H7P15-12LM
14	1,5	RM45H7P15-14LM
16	1,5	RM45H7P15-16LM
18	1,5	RM45H7P15-18LM
20	1,5	RM45H7P15-20LM

Height of 8mm

Ø	P (mm)	Code
4	1,5	RM45H8P15-04LM
5	1,5	RM45H8P15-05LM
6	1,5	RM45H8P15-06LM
8	1,5	RM45H8P15-08LM
10	1,5	RM45H8P15-10LM
12	1,5	RM45H8P15-12LM
14	1,5	RM45H8P15-14LM
16	1,5	RM45H8P15-16LM
18	1,5	RM45H8P15-18LM
20	1,5	RM45H8P15-20LM
25	1,5	RM45H8P15-25LM

MAXVENTS *Manganese Brass - Profiled Model*

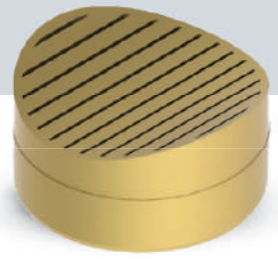


Slots of 0,45mm and internal taper of 35° - Recommended for sands of grain size below 55 AFS. P (mm) and P(in) are the machining heights.

Height of 10mm

Ø	P (mm)	Code
4	1,5	RM45H10P15-04LM
5	1,5	RM45H10P15-05LM
6	1,5	RM45H10P15-06LM
8	1,5	RM45H10P15-08LM
10	1,5	RM45H10P15-10LM
12	1,5	RM45H10P15-12LM
14	1,5	RM45H10P15-14LM
16	1,5	RM45H10P15-16LM
20	1,5	RM45H10P15-20LM
25	1,5	RM45H10P15-25LM
6	4	RM45H10P40-06LM
8	4	RM45H10P40-08LM
10	4	RM45H10P40-10LM
12	4	RM45H10P40-12LM
14	4	RM45H10P40-14LM
16	4	RM45H10P40-16LM
20	4	RM45H10P40-20LM
25	4	RM45H10P40-25LM

MAXVENTS *Manganese Brass - Curved Concave Model*



Slots of 0,3mm and internal taper of 35° - Recommended for sands of grain size between 55 AFS and 70 AFS

Height of 5/16"

\emptyset	Radius (in)	Code
1/4"	.177"	RP30H5/16R4.5-1/4LM
5/16"	.709"	RP30H5/16R18-5/16LM
5/16"	.866"	RP30H5/16R22-5/16LM
5/16"	1.969"	RP30H5/16R50-5/16LM
1/2"	1.397"	RP30H5/16R35.5-1/2LM
5/8"	1.878"	RP30H5/16R47.7-5/8LM

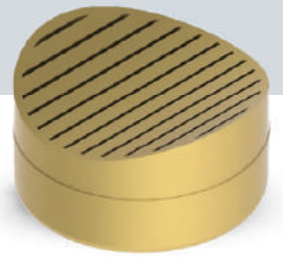
Height of 8mm

\emptyset	Radius (mm)	Code
4	13	RM30H8R13-04LM
5	15	RM30H8R15-05LM
6	4.1	RM30H8R4.1-06LM
6	16	RM30H8R16-06LM
6	20	RM30H8R20-06LM
8	18	RM30H8R18-08LM
8	22	RM30H8R22-08LM
8	50	RM30H8R50-08LM
10	22	RM30H8R22-10LM
14	47.7	RM30H8R47.7-14LM
16	47.7	RM30H8R47.7-16LM
22	46.8	RM30H8R46.8-22LM

Height of 10mm

\emptyset	Radius (mm)	Code
4	13	RM30H10R13-04LM
5	15	RM30H10R15-05LM
6	4.1	RM30H10R4.1-06LM
6	16	RM30H10R16-06LM
6	20	RM30H10R20-06LM
8	18	RM30H10R18-08LM
8	22	RM30H10R22-08LM
8	50	RM30H10R50-08LM
10	22	RM30H10R22-10LM
14	47.7	RM30H10R47.7-14LM
16	47.7	RM30H10R47.7-16LM
22	46.8	RM30H10R46.8-22LM

MAXVENTS Manganese Brass - Curved Concave Model



Slots of 0,45mm and internal taper of 35° - Recommended for sands of grain size below 55 AFS

Height of 5/16"

Ø	Radius (in)	Code
3/8"	1,968"	RP45H5/16R50-3/8LM
1/2"	1,397"	RP45H5/16R35.5-1/2LM
5/8"	1,397"	RP45H5/16R35.5-5/8LM

Height of 8mm

Ø	Radius (mm)	Code
16	35.5	RM45H8R35.5-16LM

Height of 10mm

Ø	Radius (mm)	Code
16	35.5	RM45H10R35.5-16LM

MAXVENTS Manganese Brass - Curved Convex Model



Height of 5/16"

Ø	Radius (in)	Code
5/16"	0.709"	RP30H5/16CR18-5/16LM
5/16"	1.772"	RP30H5/16CR45-5/16LM

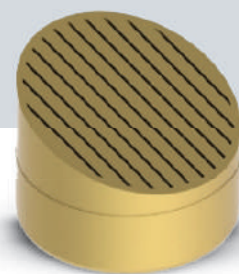
Height of 8mm

Ø	Radius (mm)	Code
6	20	RM30H8CR20-06LM
8	18	RM30H8CR18-08LM
8	45	RM30H8CR45-08LM
10	22	RM30H8CR22-10LM

Height of 10mm

Ø	Radius (mm)	Code
6	20	RM30H10CR20-06LM
8	18	RM30H10CR18-08LM
8	45	RM30H10CR45-08LM
10	22	RM30H10CR22-10LM

MAXVENTS Manganese Brass – Inclined Model



Slots of 0,3mm and internal taper of 35°- Recommended for sands of grain size size between 55 AFS and 70 AFS.

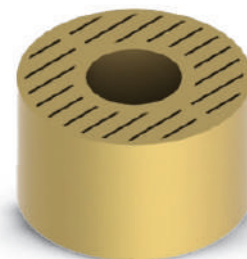
Height of 8mm

Ø	Angle	Code
4	10°	RM30H8I10-04LM
4	20°	RM30H8I20-04LM
4	30°	RM30H8I30-04LM
6	10°	RM30H8I10-06LM
6	20°	RM30H8I20-06LM
6	30°	RM30H8I30-06LM
6	45°	RM30H8I45-06LM
10	20°	RM30H8I20-10LM

Height of 10mm

Ø	Angle	Code
4	10°	RM30H10I10-04LM
4	20°	RM30H10I20-04LM
4	30°	RM30H10I30-04LM
6	10°	RM30H10I10-06LM
6	20°	RM30H10I20-06LM
6	30°	RM30H10I30-06LM
6	45°	RM30H10I45-06LM
10	20°	RM30H10I20-10LM

MAXVENTS Manganese Brass – Inclined Model



Slots of 0,3mm and internal taper of 35°- Recommended for sands of grain size size between 55 AFS and 70 AFS.

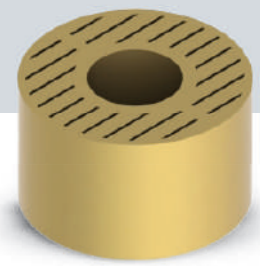
Height of 3/8"

Ø	Ø Extractor (in)	Code
1"	1/4"	RP30H3/8SE1/4-1LM
1 1/4"	1/4"	RP30H3/8SE1/4-1 1/4LM
1 1/4"	3/8"	RP30H3/8SE3/8-1 1/4LM

Height of 3/4"

Ø	Ø Extractor (in)	Code
1"	1/4"	RP30H3/4SE1/4-1LM

MAXVENTS *Manganese Brass - Extractor Standard Model*



Slots of 0,3mm and internal taper of 35° - Recommended for sands of grain size size between 55 AFS and 70 AFS.

Height of 10mm

Ø	Ø Extractor (mm)	Code
16	4	RM30H10SE4-16LM
16	5	RM30H10SE5-16LM
16	6	RM30H10SE6-16LM
16	8	RM30H10SE8-16LM
18	6	RM30H10SE6-18LM
20	5	RM30H10SE5-20LM
20	6	RM30H10SE6-20LM
20	8	RM30H10SE8-20LM
25	4	RM30H10SE4-25LM
25	5	RM30H10SE5-25LM
25	6	RM30H10SE6-25LM
25	8	RM30H10SE8-25LM
25	10	RM30H10SE10-25LM
30	6	RM30H10SE6-30LM
30	8	RM30H10SE8-30LM
30	10	RM30H10SE10-30LM

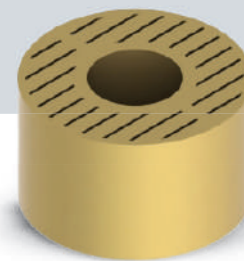
Height of 12mm

Ø	Ø Extractor (mm)	Code
16	4	RM30H12SE4-16LM
16	5	RM30H12SE5-16LM
16	6	RM30H12SE6-16LM
16	8	RM30H12SE8-16LM
18	6	RM30H12SE6-18LM
20	5	RM30H12SE5-20LM
20	6	RM30H12SE6-20LM
20	8	RM30H12SE8-20LM
25	4	RM30H12SE4-25LM
25	5	RM30H12SE5-25LM
25	6	RM30H12SE6-25LM
25	8	RM30H12SE8-25LM
25	10	RM30H12SE10-25LM
30	6	RM30H12SE6-30LM
30	8	RM30H12SE8-30LM
30	10	RM30H12SE10-30LM

Height of 20mm

Ø	Ø Extractor (mm)	Code
16	4	RM30H20SE4-16LM
16	5	RM30H20SE5-16LM
16	6	RM30H20SE6-16LM
16	8	RM30H20SE8-16LM
18	6	RM30H20SE6-18LM
20	5	RM30H20SE5-20LM
20	6	RM30H20SE6-20LM
20	8	RM30H20SE8-20LM
22	6	RM30H20SE6-22LM
25	4	RM30H20SE4-25LM
25	5	RM30H20SE5-25LM
25	6	RM30H20SE6-25LM
25	8	RM30H20SE8-25LM
25	10	RM30H20SE10-25LM
30	6	RM30H20SE6-30LM
30	8	RM30H20SE8-30LM
30	10	RM30H20SE10-30LM
35	8	RM30H20SE8-35LM

MAXVENTS *Manganese Brass - Extractor Standard Model*



Slots of 0,45mm and internal taper of 35°- Recommended for sands of grain size below 55 AFS

Height of 3/8"

Ø	Ø Extractor (in)	Code
1"	3/16"	RP45H3/8SE3/16-1LM
1 1/4"	3/8"	RP45H3/8SE3/8-1 1/4LM

Height of 3/4"

Ø	Ø Extractor (in)	Code
1"	3/16"	RP45H3/4SE3/16-1LM
1 1/4"	3/8"	RP45H3/4SE3/8-1 1/4LM

Height of 10mm

Ø	Ø Extractor (mm)	Code
16	4	RM45H10SE4-16LM
16	5	RM45H10SE5-16LM
25	5	RM45H10SE5-25LM
25	6	RM45H10SE6-25LM

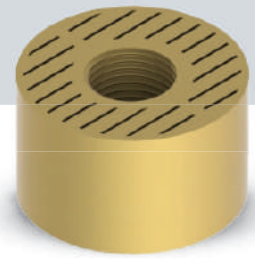
Height of 12mm

Ø	Ø Extractor (mm)	Code
16	4	RM45H12SE4-16LM
16	5	RM45H12SE5-16LM
25	5	RM45H12SE5-25LM
25	6	RM45H12SE6-25LM

Height of 20mm

Ø	Ø Extractor (mm)	Code
16	4	RM45H20SE4-16LM
16	5	RM45H20SE5-16LM
25	5	RM45H20SE5-25LM
25	6	RM45H20SE6-25LM

MAXVENTS *Manganese Brass – Standard Needle Model*



Slots of 0,3mm and internal taper of 35°- Recommended for sands of grain size between 55 AFS and 70 AFS

Height of 10mm

Ø	Thread (DIN 13)	Code
20	M6	RM30H10M6-20LM
20	M8	RM30H10M8-20LM
25	M6	RM30H10M6-25LM
25	M8	RM30H10M8-25LM
25	M10	RM30H10M10-25LM
30	M4	RM30H10M4-30LM
30	M5	RM30H10M5-30LM
30	M6	RM30H10M6-30LM
30	M8	RM30H10M8-30LM
30	M10	RM30H10M10-30LM

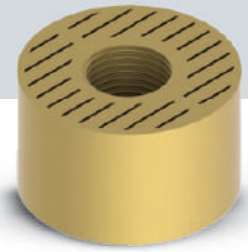
Height of 12mm

Ø	Thread (DIN 13)	Code
16	M4	RM30H12M4-16LM
16	M6	RM30H12M6-16LM
16	M8	RM30H12M8-16LM
20	M6	RM30H12M6-20LM
20	M8	RM30H12M8-20LM
25	M6	RM30H12M6-25LM
25	M8	RM30H12M8-25LM
25	M10	RM30H12M10-25LM
30	M4	RM30H12M4-30LM
30	M5	RM30H12M5-30LM
30	M6	RM30H12M6-30LM
30	M8	RM30H12M8-30LM
30	M10	RM30H12M10-30LM

Height of 20mm

Ø	Thread (DIN 13)	Code
16	M4	RM30H20M4-16LM
16	M6	RM30H20M6-16LM
16	M8	RM30H20M8-16LM
20	M6	RM30H20M6-20LM
20	M8	RM30H20M8-20LM
22	M6	RM30H20M6-22LM
25	M6	RM30H20M6-25LM
25	M8	RM30H20M8-25LM
25	M10	RM30H20M10-25LM
30	M4	RM30H20M4-30LM
30	M5	RM30H20M5-30LM
30	M6	RM30H20M6-30LM
30	M8	RM30H20M8-30LM
30	M10	RM30H20M10-30LM
35	M8	RM30H20M8-35LM

MAXVENTS Manganese Brass – Standard Needle Model



Slots of 0,45mm and internal taper of 35°- Recommended for sands of grain size below 55 AFS

Height of 10mm

Ø	Thread (DIN 13)	Code
16	M5	RM45H10M5-16LM
25	M6	RM45H10M6-25LM

Height of 12mm

Ø	Thread (DIN 13)	Code
16	M5	RM45H12M5-16LM
25	M6	RM45H12M6-25LM

Height of 20mm

Ø	Thread (DIN 13)	Code
16	M5	RM45H20M5-16LM
25	M6	RM45H20M6-25LM

MAXVENTS Manganese Brass – Standard 50 Model



Slots of 0,3mm and internal taper of 50°- Recommended for sands of grain size between 55 AFS and 70 AFS

Height of 1/4"

Ø	Code
3/16"	50RP30H1/4-3/16LM
1/4"	50RP30H1/4-1/4LM
5/16"	50RP30H1/4-5/16LM
3/8"	50RP30H1/4-3/8LM
1/2"	50RP30H1/4-1/2LM

Height of 5/16"

Ø	Code
3/16"	50RP30H5/16-3/16LM
1/4"	50RP30H5/16-1/4LM
5/16"	50RP30H5/16-5/16LM
3/8"	50RP30H5/16-3/8LM
1/2"	50RP30H5/16-1/2LM
5/8"	50RP30H5/16-5/8LM
3/4"	50RP30H5/16-3/4LM
1"	50RP30H5/16-1LM

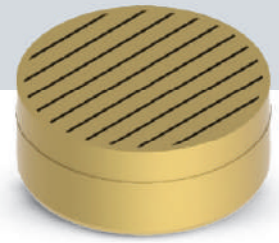
Height of 3/8"

Ø	Code
3/16"	50RP30H3/8-3/16LM
1/4"	50RP30H3/8-1/4LM
5/16"	50RP30H3/8-5/16LM
3/8"	50RP30H3/8-3/8LM
1/2"	50RP30H3/8-1/2LM
5/8"	50RP30H3/8-5/8LM
3/4"	50RP30H3/8-3/4LM
1"	50RP30H3/8-1LM

Height of 6mm

Ø	Code
4	50RM30H6-04LM
6	50RM30H6-06LM
8	50RM30H6-08LM
10	50RM30H6-10LM
12	50RM30H6-12LM

MAXVENTS Manganese Brass – Standard 50 Model



Slots of 0,3mm and internal taper of 50°- Recommended for sands of grain size between 55 AFS and 70 AFS

Height of 7mm

Ø	Code
4	50RM30H7-04LM
6	50RM30H7-06LM
8	50RM30H7-08LM
10	50RM30H7-10LM
12	50RM30H7-12LM
14	50RM30H7-14LM
16	50RM30H7-16LM
20	50RM30H7-20LM
25	50RM30H7-25LM

Height of 8mm

Ø	Code
4	50RM30H8-04LM
6	50RM30H8-06LM
8	50RM30H8-08LM
10	50RM30H8-10LM
12	50RM30H8-12LM
14	50RM30H8-14LM
16	50RM30H8-16LM
20	50RM30H8-20LM
25	50RM30H8-25LM

Height of 10mm

Ø	Code
4	50RM30H10-04LM
6	50RM30H10-06LM
8	50RM30H10-08LM
10	50RM30H10-10LM
12	50RM30H10-12LM
14	50RM30H10-14LM
16	50RM30H10-16LM
20	50RM30H10-20LM
25	50RM30H10-25LM

MAXVENTS Manganese Brass – Standard 50 Model



Slots of 0,45mm and internal taper of 50°- Recommended for sands of grain size below 55 AFS

Height of 1/4"

Ø	Code
3/16"	50RP45H1/4-3/16LM
1/4"	50RP45H1/4-1/4LM
5/16"	50RP45H1/4-5/16LM
3/8"	50RP45H1/4-3/8LM
1/2"	50RP45H1/4-1/2LM

Height of 5/16"

Ø	Code
3/16"	50RP45H5/16-3/16LM
1/4"	50RP45H5/16-1/4LM
5/16"	50RP45H5/16-5/16LM
3/8"	50RP45H5/16-3/8LM
1/2"	50RP45H5/16-1/2LM
5/8"	50RP45H5/16-5/8LM
3/4"	50RP45H5/16-3/4LM
1"	50RP45H5/16-1LM

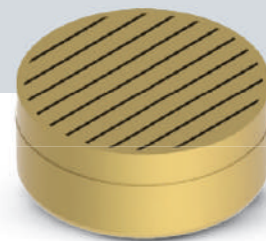
Height of 3/8"

Ø	Code
3/16"	50RP45H3/8-3/16LM
1/4"	50RP45H3/8-1/4LM
5/16"	50RP45H3/8-5/16LM
3/8"	50RP45H3/8-3/8LM
1/2"	50RP45H3/8-1/2LM
5/8"	50RP45H3/8-5/8LM
3/4"	50RP45H3/8-3/4LM
1"	50RP45H3/8-1LM

Height of 6mm

Ø	Code
6	50RM45H6-06LM
8	50RM45H6-08LM
10	50RM45H6-10LM
12	50RM45H6-12LM

MAXVENTS *Manganese Brass – Standard 50 Model*



Slots of 0,45mm and internal taper of 50° - Recommended for sands of grain size below 55 AFS

Height of 7mm

Ø	Code
6	50RM45H7-06LM
8	50RM45H7-08LM
10	50RM45H7-10LM
12	50RM45H7-12LM
14	50RM45H7-14LM
16	50RM45H7-16LM
20	50RM45H7-20LM
25	50RM45H7-25LM

Height of 8mm

Ø	Code
6	50RM45H8-06LM
8	50RM45H8-08LM
10	50RM45H8-10LM
12	50RM45H8-12LM
14	50RM45H8-14LM
16	50RM45H8-16LM
20	50RM45H8-20LM
25	50RM45H8-25LM

Height of 10mm

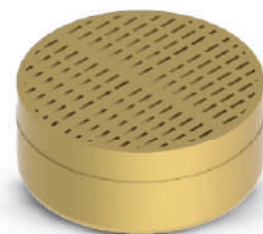
Ø	Code
6	50RM45H10-06LM
8	50RM45H10-08LM
10	50RM45H10-10LM
12	50RM45H10-12LM
14	50RM45H10-14LM
16	50RM45H10-16LM
20	50RM45H10-20LM
25	50RM45H10-25LM

ZANATTAVENTS *Latão Coquila - Modelo Standard*



ZanattaVents is a super self-cleaning vent line, which represents the concept of screen or perforated vents. They are manufactured in Leaded Yellow Brass and Manganese Brass alloys, and feature slots with 20° of taper. It's a vent line indicated for small and medium production, in Cold Box and Green Sand Molding processes.

ZANATTAVENTS *Leaded Yellow Brass – Standard Model*



Slots of 0,2mm and internal taper of 20° - Recommended for sands of grain size over 70 AFS

Height of 1/4"

Ø	Code
3/16"	ZVP20H1/4-3/16LC
1/4"	ZVP20H1/4-1/4LC
5/16"	ZVP20H1/4-5/16LC
3/8"	ZVP20H1/4-3/8LC
1/2"	ZVP20H1/4-1/2LC

Height of 5/16"

Ø	Code
3/16"	ZVP20H5/16-3/16LC
1/4"	ZVP20H5/16-1/4LC
5/16"	ZVP20H5/16-5/16LC
3/8"	ZVP20H5/16-3/8LC
1/2"	ZVP20H5/16-1/2LC
5/8"	ZVP20H5/16-5/8LC
3/4"	ZVP20H5/16-3/4LC

Height of 3/8"

Ø	Code
5/16"	ZVP20H3/8-5/16LC
3/8"	ZVP20H3/8-3/8LC
1/2"	ZVP20H3/8-1/2LC
5/8"	ZVP20H3/8-5/8LC
3/4"	ZVP20H3/8-3/4LC

Height of 6mm

Ø	Code
3	ZVM20H6-03LC
4	ZVM20H6-04LC
5	ZVM20H6-05LC
6	ZVM20H6-06LC
8	ZVM20H6-08LC
10	ZVM20H6-10LC
12	ZVM20H6-12LC

Height of 7mm

Ø	Code
6	ZVM20H7-06LC
8	ZVM20H7-08LC
10	ZVM20H7-10LC
12	ZVM20H7-12LC
15	ZVM20H7-15LC
20	ZVM20H7-20LC

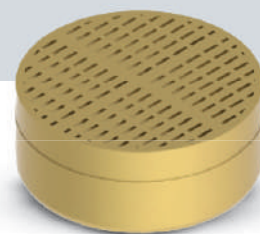
Height of 8mm

Ø	Code
6	ZVM20H8-06LC
8	ZVM20H8-08LC
10	ZVM20H8-10LC
12	ZVM20H8-12LC
15	ZVM20H8-15LC
20	ZVM20H8-20LC

Height of 10mm

Ø	Code
6	ZVM20H10-06LC
8	ZVM20H10-08LC
10	ZVM20H10-10LC
12	ZVM20H10-12LC
15	ZVM20H10-15LC
20	ZVM20H10-20LC

ZANATTAVENTS *Leaded Yellow Brass – Standard Model*



Slots of 0,3mm and internal taper of 20°- Recommended for sands of grain size between 55 AFS and 70 AFS

Height of 1/4"

Ø	Code
3/16"	ZVP30H1/4-3/16LC
1/4"	ZVP30H1/4-1/4LC
5/16"	ZVP30H1/4-5/16LC
3/8"	ZVP30H1/4-3/8LC
1/2"	ZVP30H1/4-1/2LC

Height of 5/16"

Ø	Code
1/8"	ZVP30H5/16-1/8LC
3/16"	ZVP30H5/16-3/16LC
1/4"	ZVP30H5/16-1/4LC
5/16"	ZVP30H5/16-5/16LC
3/8"	ZVP30H5/16-3/8LC
7/16"	ZVP30H5/16-7/16LC
1/2"	ZVP30H5/16-1/2LC
9/16"	ZVP30H5/16-9/16LC
5/8"	ZVP30H5/16-5/8LC
3/4"	ZVP30H5/16-3/4LC
7/8"	ZVP30H5/16-7/8LC
1"	ZVP30H5/16-1LC
1 1/4"	ZVP30H5/16-1 1/4LC
1 3/4"	ZVP30H5/16-1 3/4LC

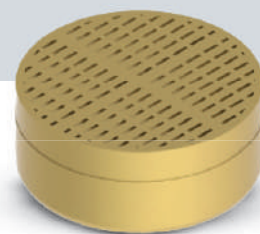
Height of 3/8"

Ø	Code
5/16"	ZVP30H3/8-5/16LC
3/8"	ZVP30H3/8-3/8LC
7/16"	ZVP30H3/8-7/16LC
1/2"	ZVP30H3/8-1/2LC
9/16"	ZVP30H3/8-9/16LC
5/8"	ZVP30H3/8-5/8LC
3/4"	ZVP30H3/8-3/4LC
7/8"	ZVP30H3/8-7/8LC
1"	ZVP30H3/8-1LC

Height of 6mm

Ø	Code
3	ZVM30H6-03LC
4	ZVM30H6-04LC
5	ZVM30H6-05LC
6	ZVM30H6-06LC
8	ZVM30H6-08LC
10	ZVM30H6-10LC
12	ZVM30H6-12LC

ZANATTAVENTS *Leaded Yellow Brass – Standard Model*



Slots of 0,3mm and internal taper of 20°- Recommended for sands of grain size between 55 AFS and 70 AFS

Height of 7mm

Ø	Code
6	ZVM30H7-06LC
8	ZVM30H7-08LC
10	ZVM30H7-10LC
12	ZVM30H7-12LC
16	ZVM30H7-16LC
20	ZVM30H7-20LC
25	ZVM30H7-25LC

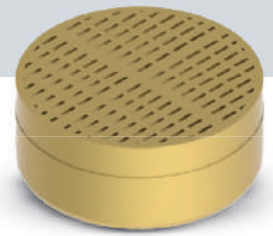
Height of 8mm

Ø	Code
3	ZVM30H8-03LC
4	ZVM30H8-04LC
5	ZVM30H8-05LC
6	ZVM30H8-06LC
7	ZVM30H8-07LC
8	ZVM30H8-08LC
10	ZVM30H8-10LC
12	ZVM30H8-12LC
13	ZVM30H8-13LC
14	ZVM30H8-14LC
15	ZVM30H8-15LC
16	ZVM30H8-16LC
18	ZVM30H8-18LC
20	ZVM30H8-20LC
22	ZVM30H8-22LC
25	ZVM30H8-25LC
26	ZVM30H8-26LC
30	ZVM30H8-30LC
44	ZVM30H8-44LC

Height of 10mm

Ø	Code
3	ZVM30H10-03LC
4	ZVM30H10-04LC
5	ZVM30H10-05LC
6	ZVM30H10-06LC
8	ZVM30H10-08LC
10	ZVM30H10-10LC
12	ZVM30H10-12LC
13	ZVM30H10-13LC
14	ZVM30H10-14LC
15	ZVM30H10-15LC
16	ZVM30H10-16LC
18	ZVM30H10-18LC
20	ZVM30H10-20LC
25	ZVM30H10-25LC

ZANATTAVENTS *Leaded Yellow Brass – Standard Model*



Slots of 0,45mm and internal taper of 20° - Recommended for sands of grain size below 55 AFS.

Height of 1/4"

Ø	Code
3/16"	ZVP45H1/4-3/16LC
1/4"	ZVP45H1/4-1/4LC
5/16"	ZVP45H1/4-5/16LC
3/8"	ZVP45H1/4-3/8LC
1/2"	ZVP45H1/4-1/2LC

Height of 5/16"

Ø	Code
3/16"	ZVP45H5/16-3/16LC
1/4"	ZVP45H5/16-1/4LC
5/16"	ZVP45H5/16-5/16LC
3/8"	ZVP45H5/16-3/8LC
7/16"	ZVP45H5/16-7/16LC
1/2"	ZVP45H5/16-1/2LC
9/16"	ZVP45H5/16-9/16LC
5/8"	ZVP45H5/16-5/8LC
3/4"	ZVP45H5/16-3/4LC
7/8"	ZVP45H5/16-7/8LC
1"	ZVP45H5/16-1LC

Height of 3/8"

Ø	Code
5/16"	ZVP45H3/8-5/16LC
3/8"	ZVP45H3/8-3/8LC
7/16"	ZVP45H3/8-7/16LC
1/2"	ZVP45H3/8-1/2LC
9/16"	ZVP45H3/8-9/16LC
5/8"	ZVP45H3/8-5/8LC
3/4"	ZVP45H3/8-3/4LC
7/8"	ZVP45H3/8-7/8LC
1"	ZVP45H3/8-1LC

Height of 6mm

Ø	Code
3	ZVM45H6-03LC
4	ZVM45H6-04LC
5	ZVM45H6-05LC
6	ZVM45H6-06LC
8	ZVM45H6-08LC
10	ZVM45H6-10LC
12	ZVM45H6-12LC

Height of 7mm

Ø	Code
6	ZVM45H7-06LC
8	ZVM45H7-08LC
10	ZVM45H7-10LC
12	ZVM45H7-12LC
16	ZVM45H7-16LC
20	ZVM45H7-20LC

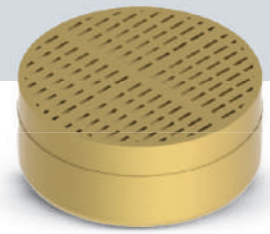
Height of 8mm

Ø	Code
3	ZVM45H8-03LC
4	ZVM45H8-04LC
5	ZVM45H8-05LC
6	ZVM45H8-06LC
7	ZVM45H8-07LC
8	ZVM45H8-08LC
10	ZVM45H8-10LC
12	ZVM45H8-12LC
13	ZVM45H8-13LC
14	ZVM45H8-14LC
15	ZVM45H8-15LC
16	ZVM45H8-16LC
18	ZVM45H8-18LC
20	ZVM45H8-20LC
22	ZVM45H8-22LC
25	ZVM45H8-25LC
26	ZVM45H8-26LC
30	ZVM45H8-30LC
44	ZVM45H8-44LC

Height of 10mm

Ø	Code
3	ZVM45H10-03LC
4	ZVM45H10-04LC
5	ZVM45H10-05LC
6	ZVM45H10-06LC
8	ZVM45H10-08LC
10	ZVM45H10-10LC
12	ZVM45H10-12LC
14	ZVM45H10-14LC
16	ZVM45H10-16LC
18	ZVM45H10-18LC
20	ZVM45H10-20LC
25	ZVM45H10-25LC
30	ZVM45H10-30LC

ZANATTAVENTS *Leaded Yellow Brass – Standard Model*



Slots of 0,2mm and internal taper of 20°- Recommended for sands of grain size over 70 AFS

Height of 1/4"

Ø	Code
3/16"	ZVP20H1/4-3/16LM
1/4"	ZVP20H1/4-1/4LM
5/16"	ZVP20H1/4-5/16LM
3/8"	ZVP20H1/4-3/8LM
1/2"	ZVP20H1/4-1/2LM

Height of 5/16"

Ø	Code
3/16"	ZVP20H5/16-3/16LM
1/4"	ZVP20H5/16-1/4LM
5/16"	ZVP20H5/16-5/16LM
3/8"	ZVP20H5/16-3/8LM
1/2"	ZVP20H5/16-1/2LM
5/8"	ZVP20H5/16-5/8LM
3/4"	ZVP20H5/16-3/4LM

Height of 3/8"

Ø	Code
5/16"	ZVP20H3/8-5/16LM
3/8"	ZVP20H3/8-3/8LM
1/2"	ZVP20H3/8-1/2LM
5/8"	ZVP20H3/8-5/8LM
3/4"	ZVP20H3/8-3/4LM

Height of 6mm

Ø	Code
3	ZVM20H6-03LM
4	ZVM20H6-04LM
5	ZVM20H6-05LM
6	ZVM20H6-06LM
8	ZVM20H6-08LM
10	ZVM20H6-10LM
12	ZVM20H6-12LM

Height of 7mm

Ø	Code
6	ZVM20H7-06LM
8	ZVM20H7-08LM
10	ZVM20H7-10LM
12	ZVM20H7-12LM
15	ZVM20H7-15LM
20	ZVM20H7-20LM

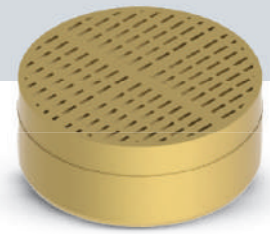
Height of 8mm

Ø	Code
6	ZVM20H8-06LM
8	ZVM20H8-08LM
10	ZVM20H8-10LM
12	ZVM20H8-12LM
15	ZVM20H8-15LM
20	ZVM20H8-20LM

Height of 10mm

Ø	Code
6	ZVM20H10-06LM
8	ZVM20H10-08LM
10	ZVM20H10-10LM
12	ZVM20H10-12LM
15	ZVM20H10-15LM
20	ZVM20H10-20LM

ZANATTAVENTS *Leaded Yellow Brass – Standard Model*



Slots of 0,3mm and internal taper of 20°- Recommended for sands of grain size between 55 AFS and 70 AFS

Height of 1/4"

Ø	Code
3/16"	ZVP30H1/4-3/16LM
1/4"	ZVP30H1/4-1/4LM
5/16"	ZVP30H1/4-5/16LM
3/8"	ZVP30H1/4-3/8LM
1/2"	ZVP30H1/4-1/2LM

Height of 5/16"

Ø	Code
1/8"	ZVP30H5/16-1/8LM
3/16"	ZVP30H5/16-3/16LM
1/4"	ZVP30H5/16-1/4LM
5/16"	ZVP30H5/16-5/16LM
3/8"	ZVP30H5/16-3/8LM
7/16"	ZVP30H5/16-7/16LM
1/2"	ZVP30H5/16-1/2LM
9/16"	ZVP30H5/16-9/16LM
5/8"	ZVP30H5/16-5/8LM
3/4"	ZVP30H5/16-3/4LM
7/8"	ZVP30H5/16-7/8LM
1"	ZVP30H5/16-1LM
1 1/4"	ZVP30H5/16-1 1/4LM
1 3/4"	ZVP30H5/16-1 3/4LM

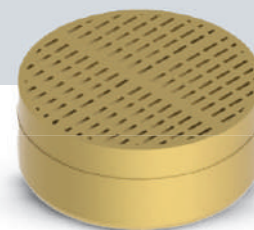
Height of 3/8"

Ø	Code
1/8"	ZVP30H3/8-1/8LM
3/16"	ZVP30H3/8-3/16LM
1/4"	ZVP30H3/8-1/4LM
5/16"	ZVP30H3/8-5/16LM
3/8"	ZVP30H3/8-3/8LM
7/16"	ZVP30H3/8-7/16LM
1/2"	ZVP30H3/8-1/2LM
9/16"	ZVP30H3/8-9/16LM
5/8"	ZVP30H3/8-5/8LM
3/4"	ZVP30H3/8-3/4LM
7/8"	ZVP30H3/8-7/8LM
1"	ZVP30H3/8-1LM

Height of 6mm

Ø	Code
3	ZVM30H6-03LM
4	ZVM30H6-04LM
5	ZVM30H6-05LM
6	ZVM30H6-06LM
8	ZVM30H6-08LM
10	ZVM30H6-10LM
12	ZVM30H6-12LM

ZANATTAVENTS - Leaded Yellow Brass – Standard Model



Slots of 0,3mm and internal taper of 20°- Recommended for sands of grain size between 55 AFS and 70 AFS

Height of 7mm

Ø	Code
6	ZVM30H7-06LM
8	ZVM30H7-08LM
10	ZVM30H7-10LM
12	ZVM30H7-12LM
16	ZVM30H7-16LM
20	ZVM30H7-20LM
25	ZVM30H7-25LM

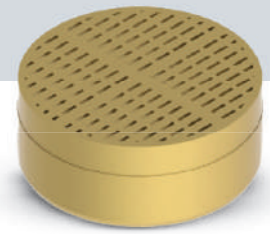
Height of 8mm

Ø	Code
3	ZVM30H8-03LM
4	ZVM30H8-04LM
5	ZVM30H8-05LM
6	ZVM30H8-06LM
7	ZVM30H8-07LM
8	ZVM30H8-08LM
10	ZVM30H8-10LM
12	ZVM30H8-12LM
13	ZVM30H8-13LM
14	ZVM30H8-14LM
15	ZVM30H8-15LM
16	ZVM30H8-16LM
18	ZVM30H8-18LM
20	ZVM30H8-20LM
22	ZVM30H8-22LM
25	ZVM30H8-25LM
26	ZVM30H8-26LM
30	ZVM30H8-30LM
44	ZVM30H8-44LM

Height of 10mm

Ø	Code
3	ZVM30H10-03LM
4	ZVM30H10-04LM
5	ZVM30H10-05LM
6	ZVM30H10-06LM
8	ZVM30H10-08LM
10	ZVM30H10-10LM
12	ZVM30H10-12LM
13	ZVM30H10-13LM
14	ZVM30H10-14LM
15	ZVM30H10-15LM
16	ZVM30H10-16LM
18	ZVM30H10-18LM
20	ZVM30H10-20LM
25	ZVM30H10-25LM

ZANATTAVENTS *Leaded Yellow Brass – Standard Model*



Slots of 0,45mm and internal taper of 20°- Recommended for sands of grain size below 55 AFS.

Height of 1/4"

Ø	Code
3/16"	ZVP45H1/4-3/16LM
1/4"	ZVP45H1/4-1/4LM
5/16"	ZVP45H1/4-5/16LM
3/8"	ZVP45H1/4-3/8LM
1/2"	ZVP45H1/4-1/2LM

Height of 5/16"

Ø	Code
3/16"	ZVP45H5/16-3/16LM
1/4"	ZVP45H5/16-1/4LM
5/16"	ZVP45H5/16-5/16LM
3/8"	ZVP45H5/16-3/8LM
7/16"	ZVP45H5/16-7/16LM
1/2"	ZVP45H5/16-1/2LM
9/16"	ZVP45H5/16-9/16LM
5/8"	ZVP45H5/16-5/8LM
3/4"	ZVP45H5/16-3/4LM
7/8"	ZVP45H5/16-7/8LM
1"	ZVP45H5/16-1LM

Height of 3/8"

Ø	Code
5/16"	ZVP45H3/8-5/16LM
3/8"	ZVP45H3/8-3/8LM
7/16"	ZVP45H3/8-7/16LM
1/2"	ZVP45H3/8-1/2LM
9/16"	ZVP45H3/8-9/16LM
5/8"	ZVP45H3/8-5/8LM
3/4"	ZVP45H3/8-3/4LM
7/8"	ZVP45H3/8-7/8LM
1"	ZVP45H3/8-1LM

Height of 6mm

Ø	Code
3	ZVM45H6-03LM
4	ZVM45H6-04LM
5	ZVM45H6-05LM
6	ZVM45H6-06LM
8	ZVM45H6-08LM
10	ZVM45H6-10LM
12	ZVM45H6-12LM

Height of 7mm

Ø	Code
6	ZVM45H7-06LM
8	ZVM45H7-08LM
10	ZVM45H7-10LM
12	ZVM45H7-12LM
16	ZVM45H7-16LM
20	ZVM45H7-20LM

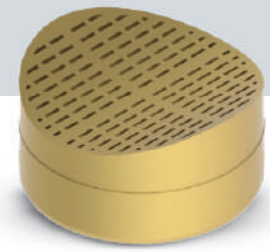
Height of 8mm

Ø	Code
3	ZVM45H8-03LM
4	ZVM45H8-04LM
5	ZVM45H8-05LM
6	ZVM45H8-06LM
7	ZVM45H8-07LM
8	ZVM45H8-08LM
10	ZVM45H8-10LM
12	ZVM45H8-12LM
13	ZVM45H8-13LM
14	ZVM45H8-14LM
15	ZVM45H8-15LM
16	ZVM45H8-16LM
18	ZVM45H8-18LM
20	ZVM45H8-20LM
22	ZVM45H8-22LM
25	ZVM45H8-25LM
26	ZVM45H8-26LM
30	ZVM45H8-30LM
44	ZVM45H8-44LM

Height of 10mm

Ø	Code
3	ZVM45H10-03LM
4	ZVM45H10-04LM
5	ZVM45H10-05LM
6	ZVM45H10-06LM
8	ZVM45H10-08LM
10	ZVM45H10-10LM
12	ZVM45H10-12LM
14	ZVM45H10-14LM
16	ZVM45H10-16LM
18	ZVM45H10-18LM
20	ZVM45H10-20LM
25	ZVM45H10-25LM
30	ZVM45H10-30LM

ZANATTAVENTS *Manganese Brass - Curved Concave*



Slots of 0,3mm and internal taper of 20°- Recommended for sands of grain size between 55 AFS and 70 AFS

Height of 5/16"

Ø	Radius (in)	Code
3/16"	.295"	ZVP30H5/16R7.5-3/16LM
1/4"	.370"	ZVP30H5/16R9.4-1/4LM
5/16"	.295"	ZVP30H5/16R7.5-5/16LM
5/16"	.740"	ZVP30H5/16R18.8-5/16LM
5/16"	1.256"	ZVP30H5/16R32-5/16LM
1/2"	1.456"	ZVP30H5/16R37-1/2LM
1/2"	1.693"	ZVP30H5/16R43-1/2LM
5/8"	1.693"	ZVP30H5/16R43-5/8LM

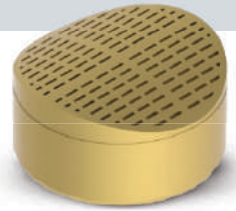
Height of 8mm

Ø	Radius (mm)	Code
4	4	ZVM30H8R4-04LM
4	9.6	ZVM30H8R9.6-04LM
5	12	ZVM30H8R12-05LM
6	5	ZVM30H8R5-06LM
6	9.6	ZVM30H8R9.6-06LM
8	7.75	ZVM30H8R7.75-08LM
8	18.8	ZVM30H8R18.8-08LM
8	32	ZVM30H8R32-08LM
10	32	ZVM30H8R32-10LM
12	23.8	ZVM30H8R23.8-12LM
12	37	ZVM30H8R37-12LM
12	43	ZVM30H8R43-12LM
14	18.54	ZVM30H8R18.54-14LM
16	43	ZVM30H8R43-16LM
25	28.1	ZVM30H8R28.1-25LM
25	44.5	ZVM30H8R44.5-25LM

Height of 10mm

Ø	Radius (mm)	Code
4	4	ZVM30H10R4-04LM
4	9.6	ZVM30H10R9.6-04LM
5	12	ZVM30H10R12-05LM
6	5	ZVM30H10R5-06LM
6	9.6	ZVM30H10R9.6-06LM
8	7.75	ZVM30H10R7.75-08LM
8	18.8	ZVM30H10R18.8-08LM
8	32	ZVM30H10R32-08LM
10	32	ZVM30H10R32-10LM
12	23.8	ZVM30H10R23.8-12LM
12	37	ZVM30H10R37-12LM
12	43	ZVM30H10R43-12LM
14	18.54	ZVM30H10R18.54-14LM
16	43	ZVM30H10R43-16LM
25	28.1	ZVM30H10R28.1-25LM
25	44.5	ZVM30H10R44.5-25LM

ZANATTAVENTS Manganese Brass - Curved Convex Model



Slots of 0,3mm and internal taper of 20°- Recommended for sands of grain size between 55 AFS and 70 AFS

Height of 8mm

Ø	Radius (mm)	Code
12	78	ZVM30H8CR78-12LM

Height of 10mm

Ø	Radius (mm)	Code
12	78	ZVM30H10CR78-12LM

ZANATTAVENTS Manganese Brass – Inclined Model



Slots of 0,3mm and internal taper of 20°- Recommended for sands of grain size between 55 AFS and 70 AFS

Height of 5/16"

Ø	Angle	Code
5/16"	10°	ZVP30H5/16I10-5/16LM
5/16"	20°	ZVP30H5/16I20-5/16LM
5/16"	30°	ZVP30H5/16I30-5/16LM

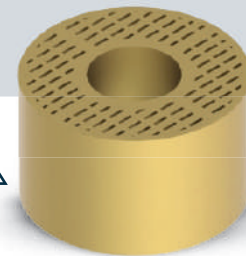
Height of 8mm

Ø	Angle	Code
5	10°	ZVM30H8I10-05LM
5	20°	ZVM30H8I20-05LM
8	10°	ZVM30H8I10-08LM
8	20°	ZVM30H8I20-08LM
8	30°	ZVM30H8I30-08LM
12	5°	ZVM30H8I5-12LM

Height of 10mm

Ø	Angle	Code
5	10°	ZVM30H10I10-05LM
5	20°	ZVM30H10I20-05LM
8	10°	ZVM30H10I10-08LM
8	20°	ZVM30H10I20-08LM
8	30°	ZVM30H10I30-08LM
12	5°	ZVM30H10I5-12LM

ZANATTAVENTS Manganese Brass - Extractor Standard Model



Slots of 0,3mm and internal taper of 20°- Recommended for sands of grain size between 55 AFS and 70 AFS

Height of 5/16"

Ø	Ø Extractor (in)	Code
1"	3/16"	ZVP30H3/8SE3/16-1LM
1"	1/4"	ZVP30H3/8SE1/4-1LM
1"	5/16"	ZVP30H3/8SE5/16-1LM

Height of 3/4"

Ø	Ø Extractor (in)	Code
1"	3/16"	ZVP30H3/4SE3/16-1LM
1"	1/4"	ZVP30H3/4SE1/4-1LM
1"	5/16"	ZVP30H3/4SE5/16-1LM

Height of 10mm

Ø	Ø Extractor (mm)	Code
18	5	ZVM30H10SE5-18LM
18	6	ZVM30H10SE6-18LM
20	5	ZVM30H10SE5-20LM
20	6	ZVM30H10SE6-20LM
25	4	ZVM30H10SE4-25LM
25	5	ZVM30H10SE5-25LM
25	6	ZVM30H10SE6-25LM
25	8	ZVM30H10SE8-25LM
30	8	ZVM30H10SE8-30LM

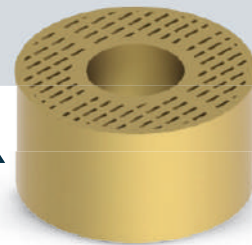
Height of 12mm

Ø	Ø Extractor (mm)	Code
18	5	ZVM30H12SE5-18LM
18	6	ZVM30H12SE6-18LM
20	5	ZVM30H12SE5-20LM
20	6	ZVM30H12SE6-20LM
25	4	ZVM30H12SE4-25LM
25	5	ZVM30H12SE5-25LM
25	6	ZVM30H12SE6-25LM
25	8	ZVM30H12SE8-25LM
30	8	ZVM30H12SE8-30LM

Height of 20mm

Ø	Ø Extractor (mm)	Code
18	5	ZVM30H20SE5-18LM
18	6	ZVM30H20SE6-18LM
20	5	ZVM30H20SE5-20LM
20	6	ZVM30H20SE6-20LM
25	4	ZVM30H20SE4-25LM
25	5	ZVM30H20SE5-25LM
25	6	ZVM30H20SE6-25LM
25	8	ZVM30H20SE8-25LM
30	8	ZVM30H20SE8-30LM

ZANATTAVENTS *Manganese Brass - Extractor Standard Model*



Slots of 0,45mm and internal taper of 20°- Recommended for sands of grain size below 55 AFS

Height of 10mm

Ø	Ø Extractor (mm)	Code
16	5	ZVM45H10SE5-16LM
25	6	ZVM45H10SE6-25LM
45	6	ZVM45H10SE6-45LM

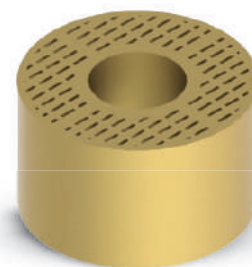
Height of 12mm

Ø	Ø Extractor (mm)	Code
16	5	ZVM45H12SE5-16LM
25	6	ZVM45H12SE6-25LM
45	6	ZVM45H12SE6-45LM

Height of 20mm

Ø	Ø Extractor (mm)	Code
16	5	ZVM45H20SE5-16LM
25	6	ZVM45H20SE6-25LM
45	6	ZVM45H20SE6-45LM

ZANATTAVENTS - *Manganese Brass – Standard Needle Model*



Slots of 0,3mm and internal taper of 20°- Recommended for sands of grain size between 55 AFS and 70 AFS

Height of 3/4"

Ø	Thread (UNF)	Code
1"	1/4"	ZVP30H3/4M1/4-1LM
1"	5/16"	ZVP30H3/4M5/16-1LM

Height of 10mm

Ø	Thread (DIN 13)	Code
18	M6	ZVM30H10M6-18LM
20	M6	ZVM30H10M6-20LM
25	M6	ZVM30H10M6-25LM
25	M8	ZVM30H10M8-25LM
30	M8	ZVM30H10M8-30LM

Height of 12mm

Ø	Ø Extractor (mm)	Code
18	M6	ZVM30H12M6-18LM
20	M6	ZVM30H12M6-20LM
25	M6	ZVM30H12M6-25LM
25	M8	ZVM30H12M8-25LM
30	M8	ZVM30H12M8-30LM

Altura de 20mm

Ø	Rosca (DIN 13)	Código
18	M6	ZVM30H20M6-18LM
20	M6	ZVM30H20M6-20LM
25	M6	ZVM30H20M6-25LM
25	M8	ZVM30H20M8-25LM
30	M8	ZVM30H20M8-30LM

MELTVENTS-FS



MeltVents-FS is a super self-cleaning vent line, which represents the concept of slotted vents. They are manufactured in Stainless Steel and Carbon Steel alloys, and have slots with 35° or 50° of taper. It's a vent line indicated for medium and high production, in Cold Box, Green Sand Molding, Hot Box, Warm Box and Shell Molding processes.

MELTVENTS-FS Stainless Steel – Standard Model



Slots of 0,2mm and internal taper of 35°- Recommended for sands of grain size over 70 AFS

Height of 1/4"

Ø	Code
3/16"	FSP20H1/4-3/16AI
1/4"	FSP20H1/4-1/4AI
5/16"	FSP20H1/4-5/16AI
3/8"	FSP20H1/4-3/8AI
1/2"	FSP20H1/4-1/2AI

Height of 5/16"

Ø	Code
3/16"	FSP20H5/16-3/16AI
1/4"	FSP20H5/16-1/4AI
5/16"	FSP20H5/16-5/16AI
3/8"	FSP20H5/16-3/8AI
7/16"	FSP20H5/16-7/16AI
1/2"	FSP20H5/16-1/2AI
9/16"	FSP20H5/16-9/16AI
5/8"	FSP20H5/16-5/8AI
3/4"	FSP20H5/16-3/4AI
7/8"	FSP20H5/16-7/8AI
1"	FSP20H5/16-1AI

Height of 3/8"

Ø	Code
5/16"	FSP20H3/8-5/16AI
3/8"	FSP20H3/8-3/8AI
1/2"	FSP20H3/8-1/2AI
5/8"	FSP20H3/8-5/8AI
3/4"	FSP20H3/8-3/4AI

Height of 6mm

Ø	Code
3	FSM20H6-03AI
4	FSM20H6-04AI
5	FSM20H6-05AI
6	FSM20H6-06AI
8	FSM20H6-08AI
10	FSM20H6-10AI
12	FSM20H6-12AI

MELTVENTS-FS Stainless Steel – Standard Model



Slots of 0,2mm and internal taper of 35°- Recommended for sands of grain size over 70 AFS

Height of 7mm

Ø	Code
3	FSM20H7-03AI
4	FSM20H7-04AI
5	FSM20H7-05AI
6	FSM20H7-06AI
8	FSM20H7-08AI
10	FSM20H7-10AI
12	FSM20H7-12AI
14	FSM20H7-14AI
16	FSM20H7-16AI
18	FSM20H7-18AI
20	FSM20H7-20AI

Height of 8mm

Ø	Code
4	FSM20H8-04AI
5	FSM20H8-05AI
6	FSM20H8-06AI
7	FSM20H8-07AI
8	FSM20H8-08AI
10	FSM20H8-10AI
12	FSM20H8-12AI
13	FSM20H8-13AI
14	FSM20H8-14AI
16	FSM20H8-16AI
20	FSM20H8-20AI
22	FSM20H8-22AI
25	FSM20H8-25AI

Height of 10mm

Ø	Code
4	FSM20H10-04AI
5	FSM20H10-05AI
6	FSM20H10-06AI
8	FSM20H10-08AI
10	FSM20H10-10AI
12	FSM20H10-12AI
13	FSM20H10-13AI
14	FSM20H10-14AI
16	FSM20H10-16AI
18	FSM20H10-18AI
20	FSM20H10-20AI
22	FSM20H10-22AI
25	FSM20H10-25AI

MELTVENTS-FS Stainless Steel – Standard Model



Slots of 0,3mm and internal taper of 35°- Recommended for sands of grain size between 55 AFS and 70 AFS

Height of 1/4"

Ø	Code
3/16"	FSP30H1/4-3/16AI
1/4"	FSP30H1/4-1/4AI
5/16"	FSP30H1/4-5/16AI
3/8"	FSP30H1/4-3/8AI
1/2"	FSP30H1/4-1/2AI

Height of 5/16"

Ø	Code
1/8"	FSP30H5/16-1/8AI
3/16"	FSP30H5/16-3/16AI
1/4"	FSP30H5/16-1/4AI
5/16"	FSP30H5/16-5/16AI
3/8"	FSP30H5/16-3/8AI
7/16"	FSP30H5/16-7/16AI
1/2"	FSP30H5/16-1/2AI
9/16"	FSP30H5/16-9/16AI
5/8"	FSP30H5/16-5/8AI
3/4"	FSP30H5/16-3/4AI
7/8"	FSP30H5/16-7/8AI
1"	FSP30H5/16-1AI
1 1/4"	FSP30H5/16-1 1/4AI
1 3/4"	FSP30H5/16-1 3/4AI

Height of 3/8"

Ø	Code
5/16"	FSP30H3/8-5/16AI
3/8"	FSP30H3/8-3/8AI
7/16"	FSP30H3/8-7/16AI
1/2"	FSP30H3/8-1/2AI
9/16"	FSP30H3/8-9/16AI
5/8"	FSP30H3/8-5/8AI
3/4"	FSP30H3/8-3/4AI
7/8"	FSP30H3/8-7/8AI
1"	FSP30H3/8-1AI

Height of 6mm

Ø	Code
3	FSM30H6-03AI
4	FSM30H6-04AI
5	FSM30H6-05AI
6	FSM30H6-06AI
8	FSM30H6-08AI
10	FSM30H6-10AI
12	FSM30H6-12AI

Height of 7mm

Ø	Code
3	FSM30H7-03AI
4	FSM30H7-04AI
5	FSM30H7-05AI
6	FSM30H7-06AI
8	FSM30H7-08AI
10	FSM30H7-10AI
12	FSM30H7-12AI
14	FSM30H7-14AI
16	FSM30H7-16AI
18	FSM30H7-18AI
20	FSM30H7-20AI

Height of 8mm

Ø	Code
3	FSM30H8-03AI
4	FSM30H8-04AI
5	FSM30H8-05AI
6	FSM30H8-06AI
7	FSM30H8-07AI
8	FSM30H8-08AI
10	FSM30H8-10AI
12	FSM30H8-12AI
13	FSM30H8-13AI
14	FSM30H8-14AI
15	FSM30H8-15AI
16	FSM30H8-16AI
18	FSM30H8-18AI
20	FSM30H8-20AI
22	FSM30H8-22AI
25	FSM30H8-25AI
26	FSM30H8-26AI
30	FSM30H8-30AI

Height of 10mm

Ø	Code
3	FSM30H10-03AI
4	FSM30H10-04AI
5	FSM30H10-05AI
6	FSM30H10-06AI
8	FSM30H10-08AI
10	FSM30H10-10AI
12	FSM30H10-12AI
13	FSM30H10-13AI
14	FSM30H10-14AI
15	FSM30H10-15AI
16	FSM30H10-16AI
18	FSM30H10-18AI
20	FSM30H10-20AI
22	FSM30H10-22AI
25	FSM30H10-25AI
26	FSM30H10-26AI
30	FSM30H10-30AI

MELTVENTS-FS *Stainless Steel – Standard Model*



Slots of 0,45mm and internal taper of 35°- Recommended for sands of grain size below 55 AFS

Height of 1/4"

Ø	Code
3/16"	FSP45H1/4-3/16AI
1/4"	FSP45H1/4-1/4AI
5/16"	FSP45H1/4-5/16AI
3/8"	FSP45H1/4-3/8AI
1/2"	FSP45H1/4-1/2AI

Height of 5/16"

Ø	Code
3/16"	FSP45H5/16-3/16AI
1/4"	FSP45H5/16-1/4AI
5/16"	FSP45H5/16-5/16AI
3/8"	FSP45H5/16-3/8AI
7/16"	FSP45H5/16-7/16AI
1/2"	FSP45H5/16-1/2AI
9/16"	FSP45H5/16-9/16AI
5/8"	FSP45H5/16-5/8AI
3/4"	FSP45H5/16-3/4AI
7/8"	FSP45H5/16-7/8AI
1"	FSP45H5/16-1AI
1 1/4"	FSP45H5/16-1 1/4AI
1 3/4"	FSP45H5/16-1 3/4AI

Height of 3/8"

Ø	Code
5/16"	FSP45H3/8-5/16AI
3/8"	FSP45H3/8-3/8AI
7/16"	FSP45H3/8-7/16AI
1/2"	FSP45H3/8-1/2AI
9/16"	FSP45H3/8-9/16AI
5/8"	FSP45H3/8-5/8AI
3/4"	FSP45H3/8-3/4AI
7/8"	FSP45H3/8-7/8AI
1"	FSP45H3/8-1AI

Height of 6mm

Ø	Code
3	FSM45H6-03AI
4	FSM45H6-04AI
5	FSM45H6-05AI
6	FSM45H6-06AI
8	FSM45H6-08AI
10	FSM45H6-10AI
12	FSM45H6-12AI

MELTVENTS-FS Stainless Steel – Standard Model



Slots of 0,45mm and internal taper of 35°- Recommended for sands of grain size below 55 AFS

Height of 7mm

Ø	Code
4	FSM45H7-04AI
5	FSM45H7-05AI
6	FSM45H7-06AI
8	FSM45H7-08AI
10	FSM45H7-10AI
12	FSM45H7-12AI
14	FSM45H7-14AI
16	FSM45H7-16AI
18	FSM45H7-18AI
20	FSM45H7-20AI

Height of 8mm

Ø	Code
3	FSM45H8-03AI
4	FSM45H8-04AI
5	FSM45H8-05AI
6	FSM45H8-06AI
7	FSM45H8-07AI
8	FSM45H8-08AI
9	FSM45H8-09AI
10	FSM45H8-10AI
12	FSM45H8-12AI
12.5	FSM45H8-12.5AI
13	FSM45H8-13AI
14	FSM45H8-14AI
15	FSM45H8-15AI
16	FSM45H8-16AI
18	FSM45H8-18AI
20	FSM45H8-20AI
22	FSM45H8-22AI
24	FSM45H8-24AI
25	FSM45H8-25AI
26	FSM45H8-26AI
30	FSM45H8-30AI
44	FSM45H8-44AI

Height of 10mm

Ø	Code
3	FSM45H10-03AI
4	FSM45H10-04AI
5	FSM45H10-05AI
6	FSM45H10-06AI
8	FSM45H10-08AI
9	FSM45H10-09AI
10	FSM45H10-10AI
12	FSM45H10-12AI
14	FSM45H10-14AI
16	FSM45H10-16AI
18	FSM45H10-18AI
20	FSM45H10-20AI
22	FSM45H10-22AI
24	FSM45H10-24AI
25	FSM45H10-25AI
26	FSM45H10-26AI
30	FSM45H10-30AI

MELTVENTS-FS Stainless Steel – Curved Concave Model



Slots of 0,3mm and internal taper of 35°- Recommended for sands of grain size between 55 AFS and 70 AFS

Height of 5/16"

Ø	Radius (in)	Code
1/4"	.177"	FSP30H5/16R4.5-1/4AI
5/16"	.709"	FSP30H5/16R18-5/16AI
5/16"	.866"	FSP30H5/16R22-5/16AI
5/16"	1.969"	FSP30H5/16R50-5/16AI
1/2"	1.397"	FSP30H5/16R35.5-1/2AI
5/8"	1.878"	FSP30H5/16R47.7-5/8AI

Height of 8mm

Ø	Radius (mm)	Code
4	13	FSM30H8R13-04AI
5	15	FSM30H8R15-05AI
6	4.1	FSM30H8R4.1-06AI
6	16	FSM30H8R16-06AI
6	20	FSM30H8R20-06AI
8	18	FSM30H8R18-08AI
8	22	FSM30H8R22-08AI
8	50	FSM30H8R50-08AI
10	22	FSM30H8R22-10AI
14	47.7	FSM30H8R47.7-14AI
16	47.7	FSM30H8R47.7-16AI
22	46.8	FSM30H8R46.8-22AI

Height of 10mm

Ø	Radius (mm)	Code
4	13	FSM30H10R13-04AI
5	15	FSM30H10R15-05AI
6	4.1	FSM30H10R4.1-06AI
6	16	FSM30H10R16-06AI
6	20	FSM30H10R20-06AI
8	18	FSM30H10R18-08AI
8	22	FSM30H10R22-08AI
8	50	FSM30H10R50-08AI
10	22	FSM30H10R22-10AI
14	47.7	FSM30H10R47.7-14AI
16	47.7	FSM30H10R47.7-16AI
22	46.8	FSM30H10R46.8-22AI

MELTVENTS-FS Stainless Steel – Curved Concave Model



Slots of 0,45mm and internal taper of 35°- Recommended for sands of grain size below 55 AFS

Height of 5/16"

Ø	Radius (in)	Code
3/8"	1.968"	FSP45H5/16R50-3/8AI
1/2"	1.397"	FSP45H5/16R35.5-1/2AI
5/8"	1.397"	FSP45H5/16R35.5-5/8AI

Height of 8mm

Ø	Radius (mm)	Code
16	35.5	FSM45H8R35.5-16AI

Height of 10mm

Ø	Radius (mm)	Code
16	35.5	FSM45H10R35.5-16AI

MELTVENTS-FS Stainless Steel - Curved Convex Model



Slots of 0,3mm and internal taper of 35°- Recommended for sands of grain size between 55 AFS and 70 AFS

Height of 5/16"

Ø	Radius (in)	Code
5/16"	.709"	FSP30H5/16CR18-5/16AI
5/16"	1.772"	FSP30H5/16CR45-5/16AI

Height of 8mm

Ø	Radius (mm)	Code
6	20	FSM30H8CR20-06AI
8	18	FSM30H8CR18-08AI
8	45	FSM30H8CR45-08AI
10	22	FSM30H8CR22-10AI

Height of 10mm

Ø	Radius (mm)	Code
6	20	FSM30H10CR20-06AI
8	18	FSM30H10CR18-08AI
8	45	FSM30H10CR45-08AI
10	22	FSM30H10CR22-10AI

MELTVENTS-FS Stainless Steel- Inclined Model



Slots of 0,3mm and internal taper of 35°- Recommended for sands of grain size between 55 AFS and 70 AFS

Height of 8mm

Ø	Angle	Code
4	10°	FSM30H8I10-04AI
4	20°	FSM30H8I20-04AI
4	30°	FSM30H8I30-04AI
6	10°	FSM30H8I10-06AI
6	20°	FSM30H8I20-06AI
6	30°	FSM30H8I30-06AI
6	45°	FSM30H8I45-06AI
10	20°	FSM30H8I20-10AI

Height of 10mm

Ø	Angle	Code
4	10°	FSM30H10I10-04AI
4	20°	FSM30H10I20-04AI
4	30°	FSM30H10I30-04AI
6	10°	FSM30H10I10-06AI
6	20°	FSM30H10I20-06AI
6	30°	FSM30H10I30-06AI
6	45°	FSM30H10I45-06AI
10	20°	FSM30H10I20-10AI

MELTVENTS-FS Stainless Steel– Standard 50 Model



Slots of 0,3mm and internal taper of 50°- Recommended for sands of grain size between 55 AFS and 70 AFS

Height of 1/4"

Ø	Code
3/16"	50FSP30H1/4-3/16AI
1/4"	50FSP30H1/4-1/4AI
5/16"	50FSP30H1/4-5/16AI
3/8"	50FSP30H1/4-3/8AI
1/2"	50FSP30H1/4-1/2AI

Height of 5/16"

Ø	Code
3/16"	50FSP30H5/16-3/16AI
1/4"	50FSP30H5/16-1/4AI
5/16"	50FSP30H5/16-5/16AI
3/8"	50FSP30H5/16-3/8AI
1/2"	50FSP30H5/16-1/2AI
5/8"	50FSP30H5/16-5/8AI
3/4"	50FSP30H5/16-3/4AI
1"	50FSP30H5/16-1AI

Height of 3/8"

Ø	Code
3/16"	50FSP30H3/8-3/16AI
1/4"	50FSP30H3/8-1/4AI
5/16"	50FSP30H3/8-5/16AI
3/8"	50FSP30H3/8-3/8AI
1/2"	50FSP30H3/8-1/2AI
5/8"	50FSP30H3/8-5/8AI
3/4"	50FSP30H3/8-3/4AI
1"	50FSP30H3/8-1AI

Height of 6mm

Ø	Code
4	50FSM30H6-04AI
6	50FSM30H6-06AI
8	50FSM30H6-08AI
10	50FSM30H6-10AI
12	50FSM30H6-12AI

Height of 7mm

Ø	Code
4	50FSM30H7-04AI
6	50FSM30H7-06AI
8	50FSM30H7-08AI
10	50FSM30H7-10AI
12	50FSM30H7-12AI
14	50FSM30H7-14AI
16	50FSM30H7-16AI
20	50FSM30H7-20AI
25	50FSM30H7-25AI

Height of 8mm

Ø	Code
4	50FSM30H8-04AI
6	50FSM30H8-06AI
8	50FSM30H8-08AI
10	50FSM30H8-10AI
12	50FSM30H8-12AI
14	50FSM30H8-14AI
16	50FSM30H8-16AI
20	50FSM30H8-20AI
25	50FSM30H8-25AI

Height of 10mm

Ø	Code
4	50FSM30H10-04AI
6	50RM30H10-06LM
8	50RM30H10-08LM
10	50RM30H10-10LM
12	50RM30H10-12LM
14	50RM30H10-14LM
16	50RM30H10-16LM
20	50RM30H10-20LM
25	50RM30H10-25LM

MELTVENTS-FS Stainless Steel– Standard 50 Model



Slots of 0,45mm and internal taper of 50°- Recommended for sands of grain size below 55 AFS

Height of 1/4"

Ø	Code
3/16"	50FSP45H1/4-3/16AI
1/4"	50FSP45H1/4-1/4AI
5/16"	50FSP45H1/4-5/16AI
3/8"	50FSP45H1/4-3/8AI
1/2"	50FSP45H1/4-1/2AI

Height of 5/16"

Ø	Code
3/16"	50FSP45H5/16-3/16AI
1/4"	50FSP45H5/16-1/4AI
5/16"	50FSP45H5/16-5/16AI
3/8"	50FSP45H5/16-3/8AI
1/2"	50FSP45H5/16-1/2AI
5/8"	50FSP45H5/16-5/8AI
3/4"	50FSP45H5/16-3/4AI
1"	50FSP45H5/16-1AI

Height of 3/8"

Ø	Code
3/16"	50FSP45H3/8-3/16AI
1/4"	50FSP45H3/8-1/4AI
5/16"	50FSP45H3/8-5/16AI
3/8"	50FSP45H3/8-3/8AI
1/2"	50FSP45H3/8-1/2AI
5/8"	50FSP45H3/8-5/8AI
3/4"	50FSP45H3/8-3/4AI
1"	50FSP45H3/8-1AI

Height of 6mm

Ø	Code
6	50FSM45H6-06AI
8	50FSM45H6-08AI
10	50FSM45H6-10AI
12	50FSM45H6-12AI

Height of 7mm

Ø	Code
6	50FSM45H7-06AI
8	50FSM45H7-08AI
10	50FSM45H7-10AI
12	50FSM45H7-12AI
14	50FSM45H7-14AI
16	50FSM45H7-16AI
20	50FSM45H7-20AI
25	50FSM45H7-25AI

Height of 8mm

Ø	Code
6	50FSM45H8-06AI
8	50FSM45H8-08AI
10	50FSM45H8-10AI
12	50FSM45H8-12AI
14	50FSM45H8-14AI
16	50FSM45H8-16AI
20	50FSM45H8-20AI
25	50FSM45H8-25AI

Height of 10mm

Ø	Code
6	50FSM45H10-06AI
8	50FSM45H10-08AI
10	50FSM45H10-10AI
12	50FSM45H10-12AI
14	50FSM45H10-14AI
16	50FSM45H10-16AI
20	50FSM45H10-20AI
25	50FSM45H10-25AI

MELTVENTS-FS Carbon Steel – Profiled Model



Slots of 0,3mm and internal taper of 35°- Recommended for sands of grain size between 55 AFS and 70 AFS. P (mm) and P(in) are the machining heights.

Height of 1/4"

Ø	P (in)	Code
3/16"	.059"	FSP30H1/4P15-3/16C
1/4"	.059"	FSP30H1/4P15-1/4C
5/16"	.059"	FSP30H1/4P15-5/16C
3/8"	.059"	FSP30H1/4P15-3/8C
7/16"	.059"	FSP30H1/4P15-7/16C
1/2"	.059"	FSP30H1/4P15-1/2C

Height of 5/16"

Ø	P (in)	Code
3/16"	.059"	FSP30H5/16P15-3/16C
1/4"	.059"	FSP30H5/16P15-1/4C
5/16"	.059"	FSP30H5/16P15-5/16C
3/8"	.059"	FSP30H5/16P15-3/8C
7/16"	.059"	FSP30H5/16P15-7/16C
1/2"	.059"	FSP30H5/16P15-1/2C
9/16"	.059"	FSP30H5/16P15-9/16C
5/8"	.059"	FSP30H5/16P15-5/8C
3/4"	.059"	FSP30H5/16P15-3/4C
7/8"	.059"	FSP30H5/16P15-7/8C
1"	.059"	FSP30H5/16P15-1C

Height of 3/8"

Ø	P (in)	Code
5/16"	.059"	FSP30H3/8P15-5/16C
3/8"	.059"	FSP30H3/8P15-3/8C
7/16"	.059"	FSP30H3/8P15-7/16C
1/2"	.059"	FSP30H3/8P15-1/2C
9/16"	.059"	FSP30H3/8P15-9/16C
5/8"	.059"	FSP30H3/8P15-5/8C
3/4"	.059"	FSP30H3/8P15-3/4C
7/8"	.059"	FSP30H3/8P15-7/8C
1"	.059"	FSP30H3/8P15-1C
3/16"	.0157"	FSP30H3/8P40-3/16C
1/4"	.0157"	FSP30H3/8P40-1/4C
5/16"	.0157"	FSP30H3/8P40-5/16C
3/8"	.0157"	FSP30H3/8P40-3/8C
7/16"	.0157"	FSP30H3/8P40-7/16C
1/2"	.0157"	FSP30H3/8P40-1/2C
9/16"	.0157"	FSP30H3/8P40-9/16C
5/8"	.0157"	FSP30H3/8P40-5/8C
3/4"	.0157"	FSP30H3/8P40-3/4C
7/8"	.0157"	FSP30H3/8P40-7/8C
1"	.0157"	FSP30H3/8P40-1C

MELTVENTS-FS Carbon Steel – Profiled Model



Slots of 0,3mm and internal taper of 35°- Recommended for sands of grain size between 55 AFS and 70 AFS. P (mm) and P(in) are the machining heights.

Height of 6mm

Ø	P (mm)	Code
4	1,5	FSM30H6P15-04C
5	1,5	FSM30H6P15-05C
6	1,5	FSM30H6P15-06C
8	1,5	FSM30H6P15-08C
10	1,5	FSM30H6P15-10C
12	1,5	FSM30H6P15-12C

Height of 7mm

Ø	P (mm)	Code
4	1,5	FSM30H7P15-04C
5	1,5	FSM30H7P15-05C
6	1,5	FSM30H7P15-06C
8	1,5	FSM30H7P15-08C
10	1,5	FSM30H7P15-10C
12	1,5	FSM30H7P15-12C
14	1,5	FSM30H7P15-14C
16	1,5	FSM30H7P15-16C
18	1,5	FSM30H7P15-18C
20	1,5	FSM30H7P15-20C

Height of 8mm

Ø	P (mm)	Code
4	1,5	FSM30H8P15-04C
5	1,5	FSM30H8P15-05C
6	1,5	FSM30H8P15-06C
8	1,5	FSM30H8P15-08C
10	1,5	FSM30H8P15-10C
12	1,5	FSM30H8P15-12C
14	1,5	FSM30H8P15-14C
16	1,5	FSM30H8P15-16C
18	1,5	FSM30H8P15-18C
20	1,5	FSM30H8P15-20C
25	1,5	FSM30H8P15-25C

Height of 10mm

Ø	P (mm)	Code
4	1,5	FSM30H10P15-04C
5	1,5	FSM30H10P15-05C
6	1,5	FSM30H10P15-06C
8	1,5	FSM30H10P15-08C
10	1,5	FSM30H10P15-10C
12	1,5	FSM30H10P15-12C
14	1,5	FSM30H10P15-14C
16	1,5	FSM30H10P15-16C
20	1,5	FSM30H10P15-20C
25	1,5	FSM30H10P15-25C
6	4	FSM30H10P40-06C
8	4	FSM30H10P40-08C
10	4	FSM30H10P40-10C
12	4	FSM30H10P40-12C
14	4	FSM30H10P40-14C
16	4	FSM30H10P40-16C
20	4	FSM30H10P40-20C
25	4	FSM30H10P40-25C

MELTVENTS-FS Carbon Steel – Profiled Model



Slots of 0,45mm and internal taper of 35° - Recommended for sands of grain size below 55 AFS. P (mm) and P(in) are the machining heights.

Height of 1/4"

Ø	P (in)	Code
3/16"	0.59"	FSP45H1/4P15-3/16C
1/4"	0.59"	FSP45H1/4P15-1/4C
5/16"	0.59"	FSP45H1/4P15-5/16C
3/8"	0.59"	FSP45H1/4P15-3/8C
7/16"	0.59"	FSP45H1/4P15-7/16C
1/2"	0.59"	FSP45H1/4P15-1/2C

Height of 5/16"

Ø	P (in)	Code
3/16"	0.59"	FSP45H5/16P15-3/16C
1/4"	0.59"	FSP45H5/16P15-1/4C
5/16"	0.59"	FSP45H5/16P15-5/16C
3/8"	0.59"	FSP45H5/16P15-3/8C
7/16"	0.59"	FSP45H5/16P15-7/16C
1/2"	0.59"	FSP45H5/16P15-1/2C
9/16"	0.59"	FSP45H5/16P15-9/16C
5/8"	0.59"	FSP45H5/16P15-5/8C
3/4"	0.59"	FSP45H5/16P15-3/4C
7/8"	0.59"	FSP45H5/16P15-7/8C
1"	0.59"	FSP45H5/16P15-1C

Height of 3/8"

Ø	P (in)	Code
5/16"	0.59"	FSP45H3/8P15-5/16C
3/8"	0.59"	FSP45H3/8P15-3/8C
7/16"	0.59"	FSP45H3/8P15-7/16C
1/2"	0.59"	FSP45H3/8P15-1/2C
9/16"	0.59"	FSP45H3/8P15-9/16C
5/8"	0.59"	FSP45H3/8P15-5/8C
3/4"	0.59"	FSP45H3/8P15-3/4C
7/8"	0.59"	FSP45H3/8P15-7/8C
1"	0.59"	FSP45H3/8P15-1C
3/16"	0.157"	FSP45H3/8P40-3/16C
1/4"	0.157"	FSP45H3/8P40-1/4C
5/16"	0.157"	FSP45H3/8P40-5/16C
3/8"	0.157"	FSP45H3/8P40-3/8C
7/16"	0.157"	FSP45H3/8P40-7/16C
1/2"	0.157"	FSP45H3/8P40-1/2C
9/16"	0.157"	FSP45H3/8P40-9/16C
5/8"	0.157"	FSP45H3/8P40-5/8C
3/4"	0.157"	FSP45H3/8P40-3/4C
7/8"	0.157"	FSP45H3/8P40-7/8C
1"	0.157"	FSP45H3/8P40-1C

MELTVENTS-FS Carbon Steel – Profiled Model



Slots of 0,45mm and internal taper of 35° - Recommended for sands of grain size below 55 AFS. P (mm) and P(in) are the machining heights.

Height of 6mm

Ø	P (mm)	Code
4	1,5	FSM45H6P15-04C
5	1,5	FSM45H6P15-05C
6	1,5	FSM45H6P15-06C
8	1,5	FSM45H6P15-08C
10	1,5	FSM45H6P15-10C
12	1,5	FSM45H6P15-12C

Height of 7mm

Ø	P (mm)	Code
4	1,5	FSM45H7P15-04C
5	1,5	FSM45H7P15-05C
6	1,5	FSM45H7P15-06C
8	1,5	FSM45H7P15-08C
10	1,5	FSM45H7P15-10C
12	1,5	FSM45H7P15-12C
14	1,5	FSM45H7P15-14C
16	1,5	FSM45H7P15-16C
18	1,5	FSM45H7P15-18C
20	1,5	FSM45H7P15-20C

Height of 8mm

Ø	P (mm)	Code
4	1,5	FSM45H8P15-04C
5	1,5	FSM45H8P15-05C
6	1,5	FSM45H8P15-06C
8	1,5	FSM45H8P15-08C
10	1,5	FSM45H8P15-10C
12	1,5	FSM45H8P15-12C
14	1,5	FSM45H8P15-14C
16	1,5	FSM45H8P15-16C
18	1,5	FSM45H8P15-18C
20	1,5	FSM45H8P15-20C
25	1,5	FSM45H8P15-25C

Height of 10mm

Ø	P (mm)	Code
4	1,5	FSM45H10P15-04C
5	1,5	FSM45H10P15-05C
6	1,5	FSM45H10P15-06C
8	1,5	FSM45H10P15-08C
10	1,5	FSM45H10P15-10C
12	1,5	FSM45H10P15-12C
14	1,5	FSM45H10P15-14C
16	1,5	FSM45H10P15-16C
20	1,5	FSM45H10P15-20C
25	1,5	FSM45H10P15-25C
6	4	FSM45H10P40-06C
8	4	FSM45H10P40-08C
10	4	FSM45H10P40-10C
12	4	FSM45H10P40-12C
14	4	FSM45H10P40-14C
16	4	FSM45H10P40-16C
20	4	FSM45H10P40-20C
25	4	FSM45H10P40-25C

MELTVENTS-FS Carbon Steel – Extractor Standard Model



Slots of 0,3mm and internal taper of 35°- Recommended for sands of grain size between 55 AFS and 70 AFS

Height of 3/8"

Ø	Ø Extractor (in)	Code
1"	1/4"	FSP30H3/8SE1/4-1C
1 1/4"	1/4"	FSP30H3/8SE1/4-1 1/4C
1 1/4"	3/8"	FSP30H3/8SE3/8-1 1/4C

Height of 3/4"

Ø	Ø Extractor (in)	Code
1"	1/4"	FSP30H3/4SE1/4-1C

Height of 10mm

Ø	Ø Extractor (mm)	Code
16	4	FSM30H10SE4-16C
16	5	FSM30H10SE5-16C
16	6	FSM30H10SE6-16C
16	8	FSM30H10SE8-16C
18	6	FSM30H10SE6-18C
20	5	FSM30H10SE5-20C
20	6	FSM30H10SE6-20C
20	8	FSM30H10SE8-20C
25	4	FSM30H10SE4-25C
25	5	FSM30H10SE5-25C
25	6	FSM30H10SE6-25C
25	8	FSM30H10SE8-25C
25	10	FSM30H10SE10-25C
30	6	FSM30H10SE6-30C
30	8	FSM30H10SE8-30C
30	10	FSM30H10SE10-30C

Height of 12mm

Ø	Ø Extractor (mm)	Code
16	4	FSM30H12SE4-16C
16	5	FSM30H12SE5-16C
16	6	FSM30H12SE6-16C
16	8	FSM30H12SE8-16C
18	6	FSM30H12SE6-18C
20	5	FSM30H12SE5-20C
20	6	FSM30H12SE6-20C
20	8	FSM30H12SE8-20C
25	4	FSM30H12SE4-25C
25	5	FSM30H12SE5-25C
25	6	FSM30H12SE6-25C
25	8	FSM30H12SE8-25C
25	10	FSM30H12SE10-25C
30	6	FSM30H12SE6-30C
30	8	FSM30H12SE8-30C
30	10	FSM30H12SE10-30C

MELTVENTS-FS Carbon Steel – Extractor Standard Model



Slots of 0,3mm and internal taper of 35° - Recommended for sands of grain size between 55 AFS and 70 AFS

Height of 20mm

Ø	Ø Extractor (mm)	Code
16	4	FSM30H20SE4-16C
16	5	FSM30H20SE5-16C
16	6	FSM30H20SE6-16C
16	8	FSM30H20SE8-16C
18	6	FSM30H20SE6-18C
20	5	FSM30H20SE5-20C
20	6	FSM30H20SE6-20C
20	8	FSM30H20SE8-20C
22	6	FSM30H20SE6-22C
25	4	FSM30H20SE4-25C
25	5	FSM30H20SE5-25C
25	6	FSM30H20SE6-25C
25	8	FSM30H20SE8-25C
25	10	FSM30H20SE10-25C
30	6	FSM30H20SE6-30C
30	8	FSM30H20SE8-30C
30	10	FSM30H20SE10-30C
35	8	FSM30H20SE8-35C

MELTVENTS-FS Carbon Steel – Extractor Standard Model



Slots of 0,45mm and internal taper of 35° - Recommended for sands of grain size below 55 AFS

Height of 3/8"

Ø	Ø Extractor (in)	Code
1"	3/16"	FSP45H3/8SE3/16-1C
1 1/4"	3/8"	FSP45H3/8SE3/8-1 1/4C

Height of 3/4"

Ø	Ø Extractor (in)	Code
1"	3/16"	FSP45H3/4SE3/16-1C
1 1/4"	3/8"	FSP45H3/4SE3/8-1 1/4C

MELTVENTS-FS Carbon Steel – Extractor Standard Model



Slots of 0,45mm and internal taper of 35°- Recommended for sands of grain size below 55 AFS

Height of 10mm

Ø	Ø Extractor (mm)	Code
16	4	FSM45H10SE4-16LM
16	5	FSM45H10SE5-16LM
25	5	FSM45H10SE5-25LM
25	6	FSM45H10SE6-25LM

Height of 12mm

Ø	Ø Extractor (mm)	Code
16	4	FSM45H12SE4-16C
16	5	FSM45H12SE5-16C
25	5	FSM45H12SE5-25C
25	6	FSM45H12SE6-25C

Height of 20mm

Ø	Ø Extractor (mm)	Code
16	4	FSM45H20SE4-16C
16	5	FSM45H20SE5-16C
25	5	FSM45H20SE5-25C
25	6	FSM45H20SE6-25C

MELTVENTS-FS Aço Carbono - Modelo Agulha Standard



Slots of 0,3mm and internal taper of 35°- Recommended for sands of grain size between 55 AFS and 70 AFS

Height of 10mm

Ø	Thread (DIN 13)	Code
20	M6	FSM30H10M6-20C
20	M8	FSM30H10M8-20C
25	M6	FSM30H10M6-25C
25	M8	FSM30H10M8-25C
25	M10	FSM30H10M10-25C
30	M4	FSM30H10M4-30C
30	M5	FSM30H10M5-30C
30	M6	FSM30H10M6-30C
30	M8	FSM30H10M8-30C
30	M10	FSM30H10M10-30C

Height of 12mm

Ø	Thread (DIN 13)	Code
16	M4	FSM30H12M4-16C
16	M6	FSM30H12M6-16C
16	M8	FSM30H12M8-16C
20	M6	FSM30H12M6-20C
25	M6	FSM30H12M6-25C
25	M8	FSM30H12M8-25C
25	M10	FSM30H12M10-25C
30	M4	FSM30H12M4-30C
30	M5	FSM30H12M5-30C
30	M6	FSM30H12M6-30C
30	M8	FSM30H12M8-30C
30	M10	FSM30H12M10-30C

MELTVENTS-FS Carbon Steel – Standard Needle Model



Slots of 0,3mm and internal taper of 35°- Recommended for sands of grain size between 55 AFS and 70 AFS

Height of 20mm

Ø	Thread (DIN 13)	Code
16	M4	FSM30H20M4-16C
16	M6	FSM30H20M6-16C
16	M8	FSM30H20M8-16C
20	M6	FSM30H20M6-20C
20	M8	FSM30H20M8-20C
22	M6	FSM30H20M6-22C
25	M6	FSM30H20M6-25C
25	M8	FSM30H20M8-25C
25	M10	FSM30H20M10-25C
30	M4	FSM30H20M4-30C
30	M5	FSM30H20M5-30C
30	M6	FSM30H20M6-30C
30	M8	FSM30H20M8-30C
30	M10	FSM30H20M10-30C
35	M8	FSM30H20M8-35C

MELTVENTS-FS Aço Carbono - Modelo Agulha Standard



Ranhura de 0,45mm e com conicidade interna de 35° - Indicado para areia com granulometria entre 55 AFS e 70 AFS

Height of 10mm

Ø	Thread (DIN 13)	Code
16	M5	FSM45H10M5-16C
25	M6	FSM45H10M6-25C

Height of 12mm

Ø	Thread (DIN 13)	Code
16	M5	FSM45H12M5-16C
25	M6	FSM45H12M6-25C

Height of 20mm

Ø	Thread (DIN 13)	Code
16	M5	FSM45H20M5-16C
25	M6	FSM45H20M6-25C

MELTVENTS-VH



MeltVents-VH is a super self-cleaning vent line, which represents the concept of screen or perforated vents. They are manufactured in Stainless Steel and Carbon Steel alloys and have 20° taper slots. It's a vent line indicated for medium and high production, in Cold-Box, Green Sand Molding, Hot Box, Warm Box and Shell Molding processes.

MELTVENTS-VH Stainless Steel – Standard Model



Slots of 0,2mm and internal taper of 20°- Recommended for sands of grain size over 70 AFS

Height of 1/4"

Ø	Code
3/16"	VHP20H1/4-3/16AI
1/4"	VHP20H1/4-1/4AI
5/16"	VHP20H1/4-5/16AI
3/8"	VHP20H1/4-3/8AI
1/2"	VHP20H1/4-1/2AI

Height of 5/16"

Ø	Code
3/16"	VHP20H5/16-3/16AI
1/4"	VHP20H5/16-1/4AI
5/16"	VHP20H5/16-5/16AI
3/8"	VHP20H5/16-3/8AI
1/2"	VHP20H5/16-1/2AI
5/8"	VHP20H5/16-5/8AI
3/4"	VHP20H5/16-3/4AI

Height of 3/8"

Ø	Code
5/16"	VHP20H3/8-5/16AI
3/8"	VHP20H3/8-3/8AI
1/2"	VHP20H3/8-1/2AI
5/8"	VHP20H3/8-5/8AI
3/4"	VHP20H3/8-3/4AI

Height of 6mm

Ø	Code
3	VHM20H6-03AI
4	VHM20H6-04AI
5	VHM20H6-05AI
6	VHM20H6-06AI
8	VHM20H6-08AI
10	VHM20H6-10AI
12	VHM20H6-12AI

Height of 7mm

Ø	Code
6	VHM20H7-06AI
8	VHM20H7-08AI
10	VHM20H7-10AI
12	VHM20H7-12AI
15	VHM20H7-15AI
20	VHM20H7-20AI

Height of 8mm

Ø	Code
6	VHM20H8-06AI
8	VHM20H8-08AI
10	VHM20H8-10AI
12	VHM20H8-12AI
15	VHM20H8-15AI
20	VHM20H8-20AI

Height of 10mm

Ø	Code
6	VHM20H10-06AI
8	VHM20H10-08AI
10	VHM20H10-10AI
12	VHM20H10-12AI
15	VHM20H10-15AI
20	VHM20H10-20AI

MELTVENTS-VH Stainless Steel – Standard Model



Slots of 0,3mm and internal taper of 20°- Recommended for sands of grain size between 55 AFS and 70 AFS

Height of 1/4"

Ø	Code
3/16"	VHP30H1/4-3/16AI
1/4"	VHP30H1/4-1/4AI
5/16"	VHP30H1/4-5/16AI
3/8"	VHP30H1/4-3/8AI
1/2"	VHP30H1/4-1/2AI

Height of 5/16"

Ø	Code
1/8"	VHP30H5/16-1/8AI
3/16"	VHP30H5/16-3/16AI
1/4"	VHP30H5/16-1/4AI
5/16"	VHP30H5/16-5/16AI
3/8"	VHP30H5/16-3/8AI
7/16"	VHP30H5/16-7/16AI
1/2"	VHP30H5/16-1/2AI
9/16"	VHP30H5/16-9/16AI
5/8"	VHP30H5/16-5/8AI
3/4"	VHP30H5/16-3/4AI
7/8"	VHP30H5/16-7/8AI
1"	VHP30H5/16-1AI
1 1/4"	VHP30H5/16-1 1/4AI
1 3/4"	VHP30H5/16-1 3/4AI

Height of 3/8"

Ø	Code
5/16"	VHP30H3/8-5/16AI
3/8"	VHP30H3/8-3/8AI
7/16"	VHP30H3/8-7/16AI
1/2"	VHP30H3/8-1/2AI
9/16"	VHP30H3/8-9/16AI
5/8"	VHP30H3/8-5/8AI
3/4"	VHP30H3/8-3/4AI
7/8"	VHP30H3/8-7/8AI
1"	VHP30H3/8-1AI

Height of 6mm

Ø	Code
3	VHM30H6-03AI
4	VHM30H6-04AI
5	VHM30H6-05AI
6	VHM30H6-06AI
8	VHM30H6-08AI
10	VHM30H6-10AI
12	VHM30H6-12AI

Height of 7mm

Ø	Code
6	VHM30H7-06AI
8	VHM30H7-08AI
10	VHM30H7-10AI
12	VHM30H7-12AI
16	VHM30H7-16AI
20	VHM30H7-20AI
25	VHM30H7-25AI

MELTVENTS-VH Stainless Steel – Standard Model



Slots of 0,3mm and internal taper of 20° - Recommended for sands of grain size between 55 AFS and 70 AFS

Height of 8mm

Ø	Code
3	VHM30H8-03AI
4	VHM30H8-04AI
5	VHM30H8-05AI
6	VHM30H8-06AI
7	VHM30H8-07AI
8	VHM30H8-08AI
10	VHM30H8-10AI
12	VHM30H8-12AI
13	VHM30H8-13AI
14	VHM30H8-14AI
15	VHM30H8-15AI
16	VHM30H8-16AI
18	VHM30H8-18AI
20	VHM30H8-20AI
22	VHM30H8-22AI
25	VHM30H8-25AI
26	VHM30H8-26AI
30	VHM30H8-30AI
44	VHM30H8-44AI

Height of 10mm

Ø	Code
3	VHM30H10-03AI
4	VHM30H10-04AI
5	VHM30H10-05AI
6	VHM30H10-06AI
8	VHM30H10-08AI
10	VHM30H10-10AI
12	VHM30H10-12AI
13	VHM30H10-13AI
14	VHM30H10-14AI
15	VHM30H10-15AI
16	VHM30H10-16AI
18	VHM30H10-18AI
20	VHM30H10-20AI
25	VHM30H10-25AI

MELTVENTS-VH Stainless Steel – Standard Model



Slots of 0,45mm and internal taper of 20°- Recommended for sands of grain size below 55 AFS

Height of 1/4"

Ø	Code
3/16"	VHP45H1/4-3/16AI
1/4"	VHP45H1/4-1/4AI
5/16"	VHP45H1/4-5/16AI
3/8"	VHP45H1/4-3/8AI
1/2"	VHP45H1/4-1/2AI

Height of 5/16"

Ø	Code
3/16"	VHP45H5/16-3/16AI
1/4"	VHP45H5/16-1/4AI
5/16"	VHP45H5/16-5/16AI
3/8"	VHP45H5/16-3/8AI
7/16"	VHP45H5/16-7/16AI
1/2"	VHP45H5/16-1/2AI
9/16"	VHP45H5/16-9/16AI
5/8"	VHP45H5/16-5/8AI
3/4"	VHP45H5/16-3/4AI
7/8"	VHP45H5/16-7/8AI
1"	VHP45H5/16-1AI

Height of 3/8"

Ø	Code
5/16"	VHP45H3/8-5/16AI
3/8"	VHP45H3/8-3/8AI
7/16"	VHP45H3/8-7/16AI
1/2"	VHP45H3/8-1/2AI
9/16"	VHP45H3/8-9/16AI
5/8"	VHP45H3/8-5/8AI
3/4"	VHP45H3/8-3/4AI
7/8"	VHP45H3/8-7/8AI
1"	VHP45H3/8-1AI

Height of 6mm

Ø	Code
3	VHM45H6-03AI
4	VHM45H6-04AI
5	VHM45H6-05AI
6	VHM45H6-06AI
8	VHM45H6-08AI
10	VHM45H6-10AI
12	VHM45H6-12AI

Height of 7mm

Ø	Code
6	VHM45H7-06AI
8	VHM45H7-08AI
10	VHM45H7-10AI
12	VHM45H7-12AI
16	VHM45H7-16AI
20	VHM45H7-20AI

Height of 8mm

Ø	Code
3	VHM45H8-03AI
4	VHM45H8-04AI
5	VHM45H8-05AI
6	VHM45H8-06AI
7	VHM45H8-07AI
8	VHM45H8-08AI
10	VHM45H8-10AI
12	VHM45H8-12AI
13	VHM45H8-13AI
14	VHM45H8-14AI
15	VHM45H8-15AI
16	VHM45H8-16AI
18	VHM45H8-18AI
20	VHM45H8-20AI
22	VHM45H8-22AI
25	VHM45H8-25AI
26	VHM45H8-26AI
30	VHM45H8-30AI
44	VHM45H8-44AI

Height of 10mm

Ø	Code
3	VHM45H10-03AI
4	VHM45H10-04AI
5	VHM45H10-05AI
6	VHM45H10-06AI
8	VHM45H10-08AI
10	VHM45H10-10AI
12	VHM45H10-12AI
14	VHM45H10-14AI
16	VHM45H10-16AI
18	VHM45H10-18AI
20	VHM45H10-20AI
25	VHM45H10-25AI
30	VHM45H10-30AI

MELTVENTS-VH Stainless Steel – Curved Concave Model



Slots of 0,3mm and internal taper of 20°- Recommended for sands of grain size between 55 AFS and 70 AFS

Height of 5/16"

Ø	Radius (in)	Code
3/16"	.295"	VHP30H5/16R7.5-3/16AI
1/4"	.370"	VHP30H5/16R9.4-1/4AI
5/16"	.295"	VHP30H5/16R7.5-5/16AI
5/16"	.740"	VHP30H5/16R18.8-5/16AI
5/16"	1.259"	VHP30H5/16R32-5/16AI
1/2"	1.457"	VHP30H5/16R37-1/2AI
1/2"	1.673"	VHP30H5/16R43-1/2AI
5/8"	1.693"	VHP30H5/16R43-5/8AI

Height of 8mm

Ø	Radius(mm)	Code
4	4	VHM30H8R4-04AI
4	9.6	VHM30H8R9.6-04AI
5	12	VHM30H8R12-05AI
6	5	VHM30H8R5-06AI
6	9.6	VHM30H8R9.6-06AI
8	7.75	VHM30H8R7.75-08AI
8	18.8	VHM30H8R18.8-08AI
8	32	VHM30H8R32-08AI
10	32	VHM30H8R32-10AI
12	23.8	VHM30H8R23.8-12AI
12	37	VHM30H8R37-12AI
12	43	VHM30H8R43-12AI
14	18.54	VHM30H8R18.54-14AI
16	43	VHM30H8R43-16AI
25	28.1	VHM30H8R28.1-25AI
25	44.5	VHM30H8R44.5-25AI

Height of 10mm

Ø	Radius (mm)	Code
4	4	VHM30H10R4-04AI
4	9.6	VHM30H10R9.6-04AI
5	12	VHM30H10R12-05AI
6	5	VHM30H10R5-06AI
6	9.6	VHM30H10R9.6-06AI
8	7.75	VHM30H10R7.75-08AI
8	18.8	VHM30H10R18.8-08AI
8	32	VHM30H10R32-08AI
10	32	VHM30H10R32-10AI
12	23.8	VHM30H10R23.8-12AI
12	37	VHM30H10R37-12AI
12	43	VHM30H10R43-12AI
14	18.54	VHM30H10R18.54-14AI
16	43	VHM30H10R43-16AI
25	28.1	VHM30H10R28.1-25AI
25	44.5	VHM30H10R44.5-25AI

MELTVENTS-VH Stainless Steel - Curved Convex Mode



Slots of 0,3mm and internal taper of 20°- Recommended for sands of grain size between 55 AFS and 70 AFS

Height of 8mm

Ø	Radius (mm)	Code
12	78	VHM30H8CR78-12AI

Height of 10mm

Ø	Radius (mm)	Code
12	78	VHM30H10CR78-12AI

MELTVENTS-VH *Stainless Steel– Inclined Model*



Slots of 0,3mm and internal taper of 20°- Recommended for sands of grain size between 55 AFS and 70 AFS

Height of 5/16"

Ø	Angle	Code
5/16"	10°	VHP30H5/16I10-5/16AI
5/16"	20°	VHP30H5/16I20-5/16AI
5/16"	30°	VHP30H5/16I30-5/16AI

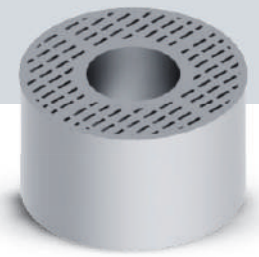
Height of 8mm

Ø	Angle	Code
5	10°	VHM30H8I10-05AI
5	20°	VHM30H8I20-05AI
8	10°	VHM30H8I10-08AI
8	20°	VHM30H8I20-08AI
8	30°	VHM30H8I30-08AI
12	5°	VHM30H8I5-12AI

Height of 10mm

Ø	Angle	Code
5	10°	VHM30H10I10-05AI
5	20°	VHM30H10I20-05AI
8	10°	VHM30H10I10-08AI
8	20°	VHM30H10I20-08AI
8	30°	VHM30H10I30-08AI
12	5°	VHM30H10I5-12AI

MELTVENTS-VH Carbon Steel – Extractor Standard Model



Slots of 0,3mm and internal taper of 20°- Recommended for sands of grain size between 55 AFS and 70 AFS

Height of 3/8"

Ø	Ø Extractor (in)	Code
1"	3/16"	VHP30H3/8SE3/16-1C
1"	1/4"	VHP30H3/8SE1/4-1C
1"	5/16"	VHP30H3/8SE5/16-1C

Height of 3/4"

Ø	Ø Extractor (in)	Code
1"	3/16"	VHP30H3/4SE3/16-1C
1"	1/4"	VHP30H3/4SE1/4-1C
1"	5/16"	VHP30H3/4SE5/16-1C

Height of 10mm

Ø	Ø Extractor (mm)	Code
18	5	VHM30H10SE5-18C
18	6	VHM30H10SE6-18C
20	5	VHM30H10SE5-20C
20	6	VHM30H10SE6-20C
25	4	VHM30H10SE4-25C
25	5	VHM30H10SE5-25C
25	6	VHM30H10SE6-25C
25	8	VHM30H10SE8-25C
30	8	VHM30H10SE8-30C

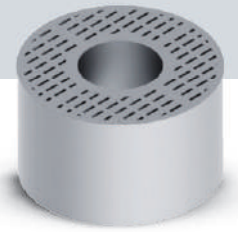
Height of 12mm

Ø	Ø Extractor (mm)	Code
18	5	VHM30H12SE5-18C
18	6	VHM30H12SE6-18C
20	5	VHM30H12SE5-20C
20	6	VHM30H12SE6-20C
25	4	VHM30H12SE4-25C
25	5	VHM30H12SE5-25C
25	6	VHM30H12SE6-25C
25	8	VHM30H12SE8-25C
30	8	VHM30H12SE8-30C

Height of 20mm

Ø	Ø Extractor (mm)	Code
18	5	VHM30H20SE5-18C
18	6	VHM30H20SE6-18C
20	5	VHM30H20SE5-20C
20	6	VHM30H20SE6-20C
25	4	VHM30H20SE4-25C
25	5	VHM30H20SE5-25C
25	6	VHM30H20SE6-25C
25	8	VHM30H20SE8-25C
30	8	VHM30H20SE8-30C

MELTVENTS-VH Carbon Steel – Extractor Standard Model



Slots of 0,45mm and internal taper of 20°- Recommended for sands of grain size below 55 AFS

Height of 10mm

Ø	Ø Extractor (mm)	Code
16	5	VHM45H10SE5-16C
25	6	VHM45H10SE6-25C
45	6	VHM45H10SE6-45C

Height of 12mm

Ø	Ø Extractor (mm)	Code
16	5	VHM45H12SE5-16C
25	6	VHM45H12SE6-25C
45	6	VHM45H12SE6-45C

Height of 20mm

Ø	Ø Extractor (mm)	Code
16	5	VHM45H20SE5-16C
25	6	VHM45H20SE6-25C
45	6	VHM45H20SE6-45C

MELTVENTS-VH Carbon Steel – Standard Needle Model



Slots of 0,3mm and internal taper of 20°- Recommended for sands of grain size between 55 AFS and 70 AFS

Height of 3/4"

Ø	Thread (UNF)	Code
1"	1/4"	VHP30H3/4M1/4-1C
1"	5/16"	VHP30H3/4M5/16-1C

Height of 10mm

Ø	Thread (DIN 13)	Code
18	M6	VHM30H10M6-18C
20	M6	VHM30H10M6-20C
25	M6	VHM30H10M6-25C
25	M8	VHM30H10M8-25C
30	M8	VHM30H10M8-30C

Height of 12mm

Ø	Thread (DIN 13)	Code
18	M6	VHM30H12M6-18C
20	M6	VHM30H12M6-20C
25	M6	VHM30H12M6-25C
25	M8	VHM30H12M8-25C
30	M8	VHM30H12M8-30C

Altura de 20mm

Ø	Thread (DIN 13)	Code
18	M6	VHM30H20M6-18C
20	M6	VHM30H20M6-20C
25	M6	VHM30H20M6-25C
25	M8	VHM30H20M8-25C
30	M8	VHM30H20M8-30C



Ave. Dr. Wady Badra, 130 - St. Indústria I | Jundiaí/SP - Brazil
ZIP Code 13.212-790 - Phone.: (11) 4492-1022
www.ventistamp.com.br - info@ventistamp.com.br