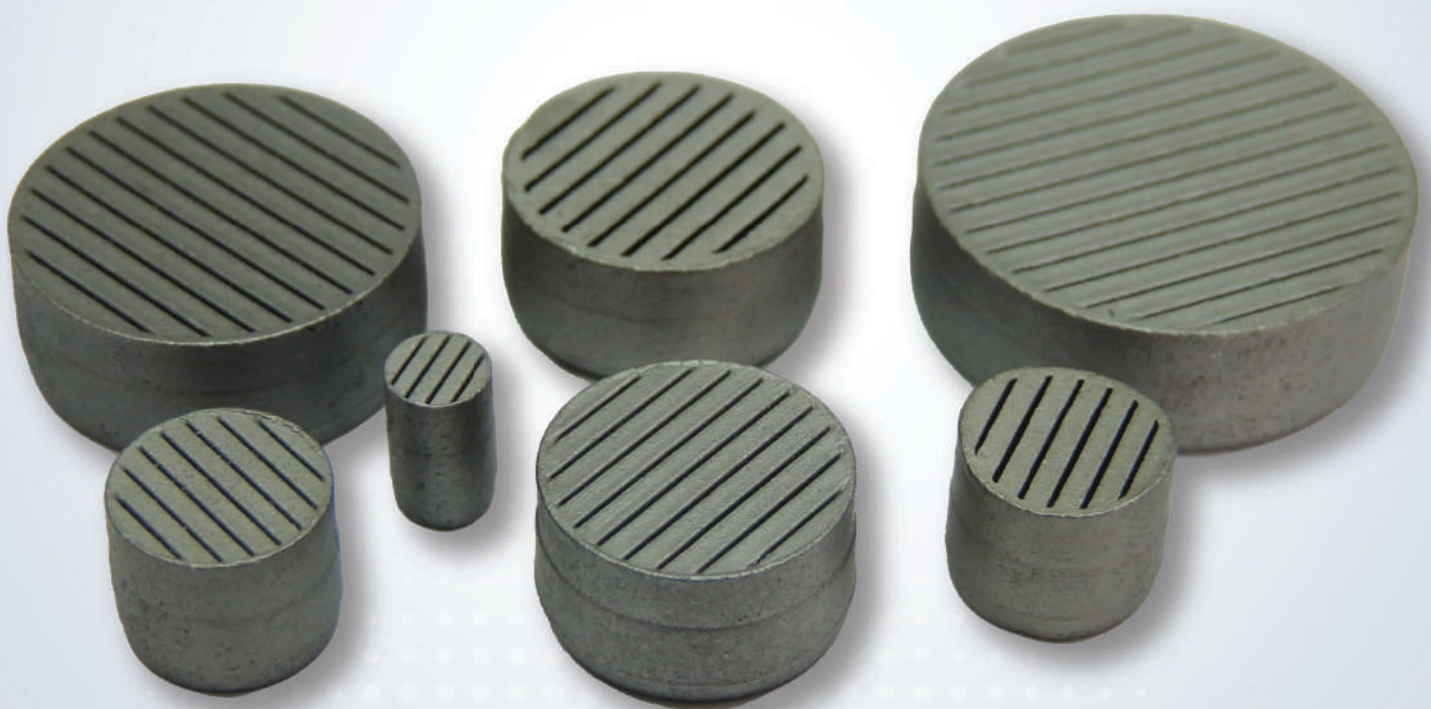




*SUPER SELF-CLEANING VENTS
FOR ALUMINIUM PROCESSES*



*HIGH PERFORMANCE
AIR RELEASE VENTS*

INDEX

TECHNOLOGY

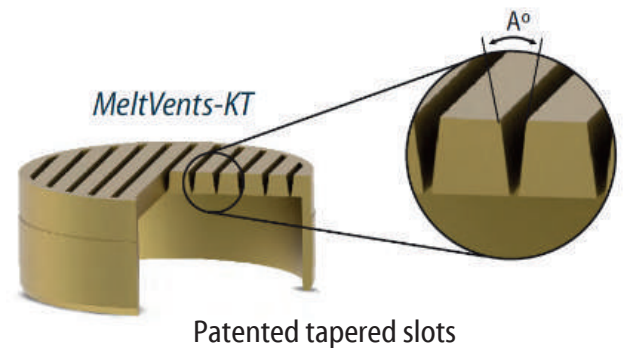
SUPER SELF-CLEANING	03
DESIGN EXCELLENCE	03
MATERIALS	03

MELTVENTS - KT

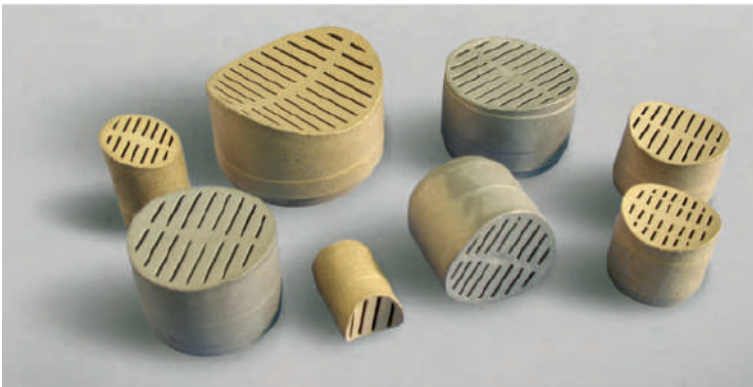
STANDARD	03
CURVED CONVEX	07
INCLINED	08

SUPER SELF-CLEANING

MELTVENTS-KT vents increase the productivity of the permanent mold used on gravity and low-pressure processes because they feature unique super tapered slots (patents US, Brazil, India and Germany), which reduce aluminium fouling.



DESIGN EXCELLENCE



Ventistamp's curved and inclined vents have revolutionised the concept of tool ventilation, due to their slots that follow the geometry of the cavity while preserving the internal taper.

MATERIALS

All vent models used in aluminium processes are manufactured in carbon steel, an alloy with excellent resistance to high temperatures and wear caused by tool cleaning processes



MELTVENTS - KT



MeltVents-KT is a super self-cleaning vent line, which represents the concept of slotted vents. They are manufactured in Carbon Steel alloy, and feature slots with inverted taper. This is a vent line suitable for any volume production, in the Gravity and Low Pressure Aluminum processes.

MELTVENTS - KT Carbon Steel - Standard Model



Slot of 0.1mm and inverted taper - Suitable for gravity and low pressure processes

Height of 5/32"

Ø	Code
3/32"	KTP10H5/32-3/32C
1/8"	KTP10H5/32-1/8C
3/16"	KTP10H5/32-3/16C

Height of 5/16"

Ø	Code
3/16"	KTP10H5/16-3/16C
1/4"	KTP10H5/16-1/4C
5/16"	KTP10H5/16-5/16C
3/8"	KTP10H5/16-3/8C
7/16"	KTP10H5/16-7/16C
1/2"	KTP10H5/16-1/2C
9/16"	KTP10H5/16-9/16C
5/8"	KTP10H5/16-5/8C
3/4"	KTP10H5/16-3/4C
7/8"	KTP10H5/16-7/8C
1"	KTP10H5/16-1C

Height of 3/8"

Ø	Code
3/16"	KTP10H3/8-3/16C
1/4"	KTP10H3/8-1/4C
5/16"	KTP10H3/8-5/16C
3/8"	KTP10H3/8-3/8C
7/16"	KTP10H3/8-7/16C
1/2"	KTP10H3/8-1/2C
9/16"	KTP10H3/8-9/16C
5/8"	KTP10H3/8-5/8C
3/4"	KTP10H3/8-3/4C
7/8"	KTP10H3/8-7/8C
1"	KTP10H3/8-1C

Height of 4mm

Ø	Code
2.5	KTM10H4-2.5C
3	KTM10H4-03C
4	KTM10H4-04C



Slot of 0.1mm and inverted taper - Suitable for gravity and low pressure processes

Height of 8mm

Ø	Code
3	KTM10H8-03C
4	KTM10H8-04C
5	KTM10H8-05C
6	KTM10H8-06C
8	KTM10H8-08C
10	KTM10H8-10C
12	KTM10H8-12C
14	KTM10H8-14C
16	KTM10H8-16C
18	KTM10H8-18C
20	KTM10H8-20C
25	KTM10H8-25C

Height of 10mm

Ø	Code
3	KTM10H10-03C
4	KTM10H10-04C
5	KTM10H10-05C
6	KTM10H10-06C
8	KTM10H10-08C
10	KTM10H10-10C
12	KTM10H10-12C
14	KTM10H10-14C
16	KTM10H10-16C
18	KTM10H10-18C
20	KTM10H10-20C
25	KTM10H10-25C

Slot of 0.2mm and inverted taper - Suitable only for gravity proces

Height of 5/32"

Ø	Code
3/32"	KTP20H5/32-3/32C
1/8"	KTP20H5/32-1/8C
3/16"	KTP20H5/32-3/16C

Height of 5/16"

Ø	Code
3/16"	KTP20H5/16-3/16C
1/4"	KTP20H5/16-1/4C
5/16"	KTP20H5/16-5/16C
3/8"	KTP20H5/16-3/8C
7/16"	KTP20H5/16-7/16C
1/2"	KTP20H5/16-1/2C
9/16"	KTP20H5/16-9/16C
5/8"	KTP20H5/16-5/8C
3/4"	KTP20H5/16-3/4C
7/8"	KTP20H5/16-7/8C
1"	KTP20H5/16-1C

Height of 3/8"

Ø	Code
3/16"	KTP20H3/8-3/16C
1/4"	KTP20H3/8-1/4C
5/16"	KTP20H3/8-5/16C
3/8"	KTP20H3/8-3/8C
7/16"	KTP20H3/8-7/16C
1/2"	KTP20H3/8-1/2C
9/16"	KTP20H3/8-9/16C
5/8"	KTP20H3/8-5/8C
3/4"	KTP20H3/8-3/4C
7/8"	KTP20H3/8-7/8C
1"	KTP20H3/8-1C

Height of 4mm

Ø	Code
2.5	KTM20H4-2.5C
3	KTM20H4-03C
4	KTM20H4-04C



Slot of 0.2mm and inverted taper – Suitable only for gravity proces

Height of 8mm

Ø	Code
3	KTM20H8-03C
4	KTM20H8-04C
5	KTM20H8-05C
6	KTM20H8-06C
8	KTM20H8-08C
10	KTM20H8-10C
12	KTM20H8-12C
14	KTM20H8-14C
16	KTM20H8-16C
18	KTM20H8-18C
20	KTM20H8-20C
25	KTM20H8-25C

Height of 10mm

Ø	Code
3	KTM20H10-03C
4	KTM20H10-04C
5	KTM20H10-05C
6	KTM20H10-06C
8	KTM20H10-08C
10	KTM20H10-10C
12	KTM20H10-12C
14	KTM20H10-14C
16	KTM20H10-16C
18	KTM20H10-18C
20	KTM20H10-20C
25	KTM20H10-25C

Slot of 0.3mm and inverted taper - Recommended only for the regions of the permanent mold where the vent gets into contact with the sand core, in the low pressure and gravity processes.

Height of 5/16"

Ø	Code
3/16"	KTP30H5/16-3/16C
1/4"	KTP30H5/16-1/4C
5/16"	KTP30H5/16-5/16C
3/8"	KTP30H5/16-3/8C
7/16"	KTP30H5/16-7/16C
1/2"	KTP30H5/16-1/2C
9/16"	KTP30H5/16-9/16C
5/8"	KTP30H5/16-5/8C
3/4"	KTP30H5/16-3/4C
7/8"	KTP30H5/16-7/8C
1"	KTP30H5/16-1C

Height of 3/8"

Ø	Code
3/16"	KTP30H3/8-3/16C
1/4"	KTP30H3/8-1/4C
5/16"	KTP30H3/8-5/16C
3/8"	KTP30H3/8-3/8C
7/16"	KTP30H3/8-7/16C
1/2"	KTP30H3/8-1/2C
9/16"	KTP30H3/8-9/16C
5/8"	KTP30H3/8-5/8C
3/4"	KTP30H3/8-3/4C
7/8"	KTP30H3/8-7/8C
1"	KTP30H3/8-1C

Height of 8mm

Ø	Code
5	KTM30H8-05C
6	KTM30H8-06C
8	KTM30H8-08C
10	KTM30H8-10C
12	KTM30H8-12C
14	KTM30H8-14C
16	KTM30H8-16C
18	KTM30H8-18C
20	KTM30H8-20C
25	KTM30H8-25C

Height of 10 mm

Ø	Code
5	KTM30H10-05C
6	KTM30H10-06C
8	KTM30H10-08C
10	KTM30H10-10C
12	KTM30H10-12C
14	KTM30H10-14C
16	KTM30H10-16C
18	KTM30H10-18C
20	KTM30H10-20C
25	KTM30H10-25C

MELTVENTS - KT Carbon Steel - Standard Model



Slot of 0.4mm and inverted taper - Recommended only for the regions of the permanent mold where the vent gets into contact with the sand core, for low pressure and gravity processes

Height of 5/16"		Height of 3/8"		Height of 8mm		Height of 10 mm	
Ø	Code	Ø	Code	Ø	Code	Ø	Code
3/16"	KTP40H5/16-3/16C	3/16"	KTP40H3/8-3/16C	5	KTM40H8-05C	5	KTM40H10-05C
1/4"	KTP40H5/16-1/4C	1/4"	KTP40H3/8-1/4C	6	KTM40H8-06C	6	KTM40H10-06C
5/16"	KTP40H5/16-5/16C	5/16"	KTP40H3/8-5/16C	8	KTM40H8-08C	8	KTM40H10-08C
3/8"	KTP40H5/16-3/8C	3/8"	KTP40H3/8-3/8C	10	KTM40H8-10C	10	KTM40H10-10C
7/16"	KTP40H5/16-7/16C	7/16"	KTP40H3/8-7/16C	12	KTM40H8-12C	12	KTM40H10-12C
1/2"	KTP40H5/16-1/2C	1/2"	KTP40H3/8-1/2C	14	KTM40H8-14C	14	KTM40H10-14C
9/16"	KTP40H5/16-9/16C	9/16"	KTP40H3/8-9/16C	16	KTM40H8-16C	16	KTM40H10-16C
5/8"	KTP40H5/16-5/8C	5/8"	KTP40H3/8-5/8C	18	KTM40H8-18C	18	KTM40H10-18C
3/4"	KTP40H5/16-3/4C	3/4"	KTP40H3/8-3/4C	20	KTM40H8-20C	20	KTM40H10-20C
7/8"	KTP40H5/16-7/8C	7/8"	KTP40H3/8-7/8C	25	KTM40H8-25C	25	KTM40H10-25C
1"	KTP40H5/16-1C	1"	KTP40H3/8-1C				

MELTVENTS - KT Carbon Steel - Curved Convex



Slot of 0.2mm and inverted taper - Suitable only for gravity process

Height of 5/16"			Height of 8mm		
Ø	Radius (in)	Code	Ø	Radius (in)	Code
5/16"	.394"	KTP20H5/16R10-5/16C	8	10	KTM20H8R10-08C

MELTVENTS - KT *Carbon Steel - Inclined*



Slot of 0.2mm and inverted taper – Suitable only for gravity process

Height of 5/16"

Ø	Angle	Code
5/16"	10°	KTP20H5/16I10-5/16C

Height of 8mm

Ø	Angle	Code
8	10°	KTM20H8I10-08C



Ave. Dr. Wady Badra, 130 - Jundiaí/SP - Brasil
ZIP Code 13.212-790 - Phone: +55 (11) 4492-1022
www.ventistamp.com.br - info@ventistamp.com.br